

NEW

THERE'S NO GOING BACK

PPN POSITIVE PLACEMENT NAILER

LINE OF SIGHT

Contoured body ensuring optimum nail placement

FLAT HEAD

Allows the tool to be balanced on surfaces

LONG FAN CYCLE

Long fan run cycle for rapid fire performance

EXPOSED TIP DESIGN

Allows for ease of placement into metal connector guide holes

ENHANCED NAIL CONTROL

Ensuring consistent drivability and correct depth of nail placement

BYPASS FOLLOWER

Effortless nail loading for maximum efficiency, saving time and effort

IMPULSE TECHNOLOGY

Fuel technology delivers reliability, comfort, and performance

UTILITY HOOK

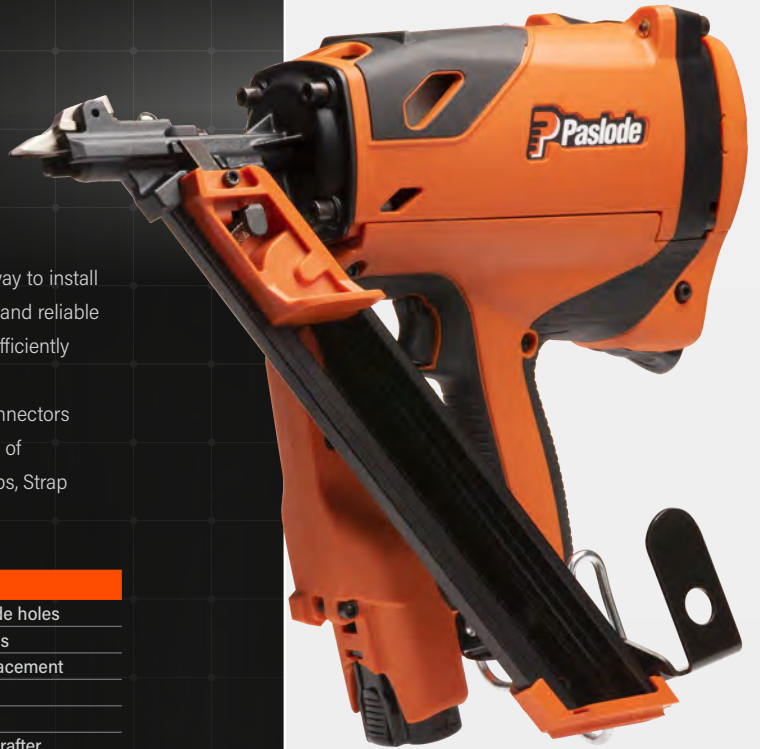
Left and right belt and rafter hook

PASLODE PPN-MASTER™

- ⊕ Positive placement nose piece for accurate fastener placement
- ⊕ Fast, single shot solution that prevents metal connector damage or distortion
- ⊕ 35 and 40mm fastener meets or exceeds metal connector installation guidelines
- ⊕ The right tool for the job:
Fast, Efficient, Easy

Paslode

FASTEN METAL CONNECTORS WITH SPEED AND PRECISION



Introducing the all-new Paslode PPN-Master™ — the easiest and fastest way to install hole punched metal connectors. The Paslode PPN-Master™ is a powerful and reliable cordless tool that has been developed to help tradespeople quickly and efficiently install metal connectors and meet installation guidelines.

The PPN-Master™ saves time and gives you peace of mind your metal connectors are installed within installation guidelines. The tool is suitable for a variety of applications, including Joist Hangers, I-Joist Hangers, Triple grips, Multigrips, Strap bracing and other metal connectors.

BEST IN CLASS COMFORT

Exposed tip design	Easy placement into metal connector guide holes
Slip proof head cover	Prevents sliding on wet or smooth surfaces
Body contoured	Optimizes line of sight for accurate nail placement
Flat head	Flat head for balanced and easy pick-up
Rubberised grip	Comfortable grip for optimal control
Left/Right hand belt & rafter hook	Easily attaches and detaches from belt or rafter
Impulse gas technology	Delivers best in class weight, power and balance

BEST IN CLASS PERFORMANCE

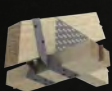
Positive placement nail guide	Accurate placement into metal connectors
Bypass follower	Quick and easy nail loading
Adjustable thumb wheel	Control for consistent depth and drive
Extended fan runtime	Extended fan runtime for cooling boost

BEST IN CLASS RELIABILITY

Impulse technology	Tried and tested technology delivering maximum tool life
Fixed-dose fuel dispensing system	Enhanced performance and reliability

Product Code	B60001
Barcode	9315104017924
Cycle Rate	1000/hr (intermittent 2-3/sec)
Length	310mm
Height	345mm
Weight	3.03kg
Fastener Length	35-40mm
Fuel Cell Life	800 nails (approx.)
Dimensions (L x H x W)	310 x 345 x 138mm
Battery Life	10,000 shots per charge
Magazine Capacity	1 strip (25 nails)

APPLICATION EXAMPLES



Cyclone Ties



Joist Hangers



Multi Grips



Strap Bracing



Triple Grips



Easy to identify once installed*
 P Nail (35mm) for Triple/Multi-Grip & Strap bracing
 P+ Nail (40mm) for Joist/I-Joist Hangers

*Check metal connector installation guides for nail size requirements

Follow us on    | paslode.com.au

