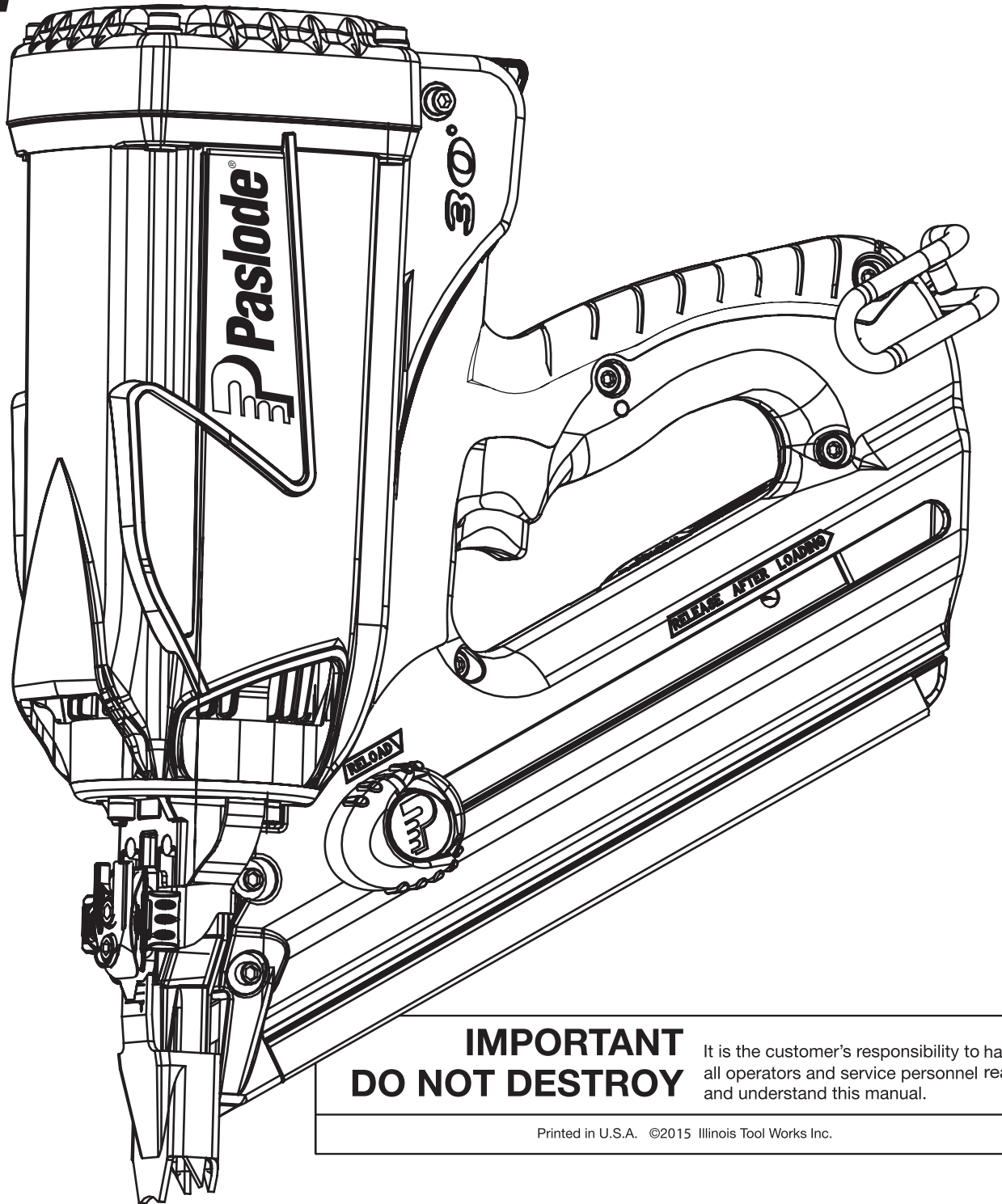


# Tool Schematic and Parts - Impulse FrameMaster Li

Part No. B20543P

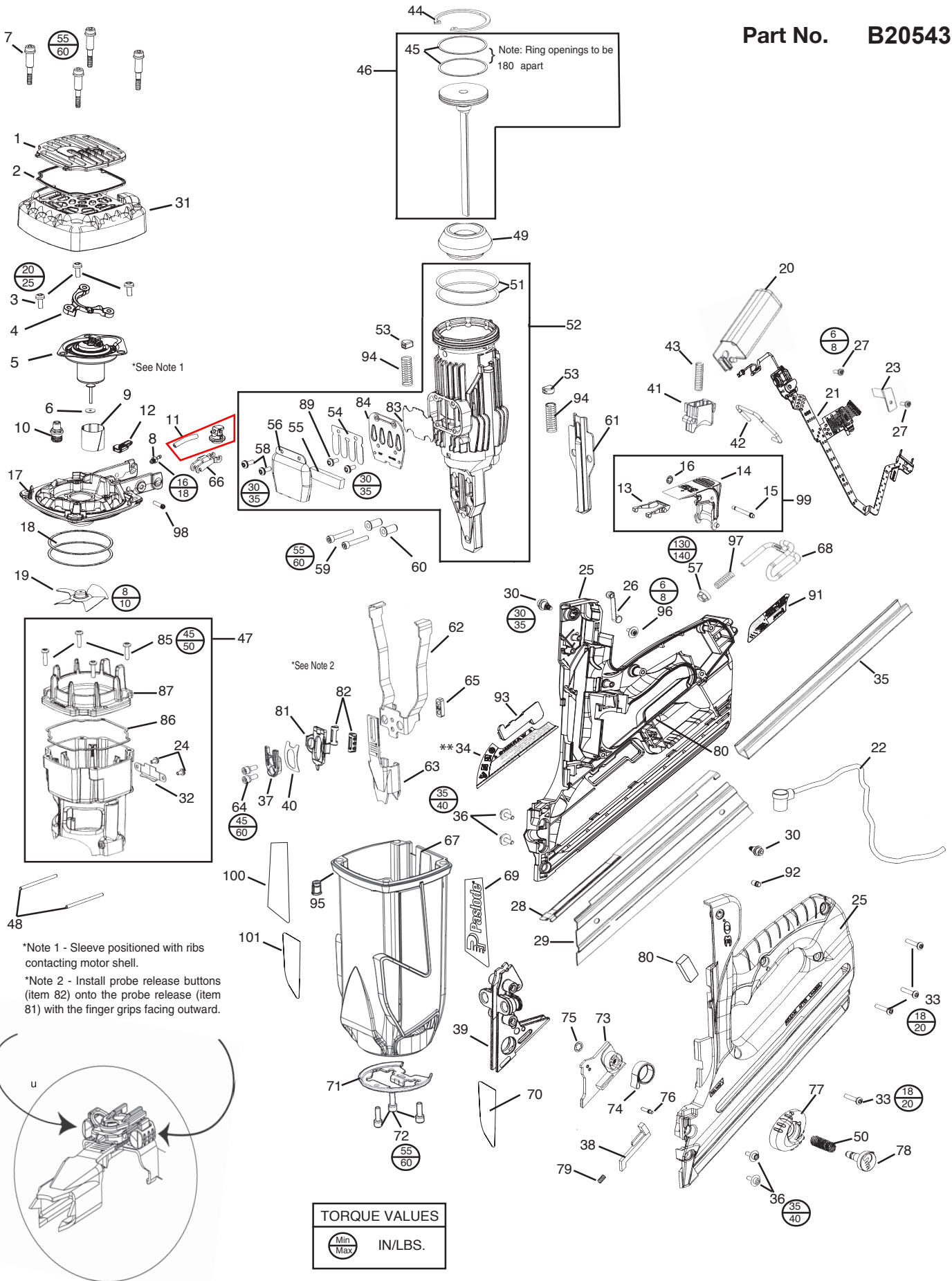
# Paslode®



**IMPORTANT  
DO NOT DESTROY**

It is the customer's responsibility to have all operators and service personnel read and understand this manual.

Printed in U.S.A. ©2015 Illinois Tool Works Inc.



TORQUE VALUES	
Min	IN/LBS.
Max	

**PARTS LEGEND**

**PASLODE CORDLEIMPULSE FRAMEMASTER LI,**

**B20543P**

1	902285	1	Grille, Black	53	404464	2	Rubber Stop
2	900315	1	Filter	54	404424	1	Reed Valve
3	900902	3	Screw, Thread Forming Sems 8-32 x 5/8	55	404422	1	Muffler
4	902637	1	Limiter	56	404423	1	Muffler Cover
5	902644	1	Fan Motor Assembly, includes Motor Mount	57	902227	1	Utility Hook Button
6	900468	1	Washer, Motor Shaft	58	900596	3	Screw Thread Forming Sems 8-32 x 7/16
7	901063	4	Shoulder Screw 10-24 x 1-1/2	59	403816	2	Socket Head Capscrew 10-24 x 1-1/8
8	904517	1	Fuel Barb	60	404445	2	Bushing, Shear Block
9	401356	1	Motor Sleeve	61	902223	1	Wear Plate, Nose
10	900286	1	Spark Plug Assembly, includes O-Ring	62	901249	1	Upper Probe
11	902215A	1	Fuel Tube & Connector	63	902225	1	Lower Probe
12	404453	1	Bracket, Cylinder Head	64	900592	2	S.H.C.S. Sems 10-32 x 1/2
13	902210	1	Fuel Dosing Lever	65	401380	1	Tie Bar
14	902209	1	Fuel Door	66	902211	1	Fuel Pivot Arm
15	902230	1	Pin, Fuel Door	67	905603	1	Housing Assembly
16	902235	1	Retaining Ring, Fuel Door	68	902237	1	Utility Hook
17	902221	1	Cylinder Head	69	905609	1	Label, <b>Paslode®</b> , Left
18	900935	2	Seal Ring	70	905615	1	Label, Silver, Left (ANZ)
19	403167	1	Fan Blade Assembly	71	902240	1	Retainer Ring, Sleeve
20	902604	1	Spark Unit Assembly	▲ 72	900593	3	S.H.C.S. Sems 10-24 x 5/8
21	902625	1	Molded Circuit Assembly	73	403985	1	Follower
22	900478	1	Spark Plug Assembly Wire	74	900520	1	Follower Bushing Spring Assembly
23	900231	1	Clip, Wire Spark Plug	75	901202	1	Retaining Ring
■ 24	403987	2	Screw Thread Forming 6-32 x 1/4	76	403986	1	Spring Pin
25	902606	1	Handle Assembly Kit - Right & Left	77	902204	1	Follower Guide
26	404448	1	Roller Lever Assembly	78	902205	1	Follower Button
27	404702	2	Screw Thread Forming 6 x 3/8	79	404457	1	Spring
28	404436	1	Nail Channel	80	904571	2	Foam Pad
29	902623	1	Cover Plate Magazine	81	902619	1	Probe Release
30	901222	2	Shoulder Screw 10-32 x 1/2	82	902620	2	Button, Probe Release
31	902208	1	Cap Assy, Black	83	404426	1	Exhaust Baffle
32	404412	1	Wear Plate, Chamber Lock	84	404425	1	Reed Plate
33	900453	4	Screw Plastite 8-16 x 7/8	■ 85	900969	4	Torx Screw 8-32 x 5/8
** 34	902608	1	Warning Label (USA)	86	900481	1	O-Ring
				87	902222	1	Combustion Chamber Ring
				89	900595	2	Torx Screw Sems 8-32 x 3/8
35	902216	1	Magazine Channel (ANZ)				
■ 36	900594	4	S.H.C.S. Sems 8 - 32 x 1/2	91B	905616	1	Nameplate (ANZ)
37	901241	1	Stop, Cage	92	900427	1	Light Pipe
38	404451	1	Lockout Bar, Follower	93	902607	1	Li-ion Fuel Label
39A	902219	1	Shear Block (USA)	94	404411	2	Spring
39B	902262	1	Shear Block (ANZ)	95	900546	1	Brass Insert
40	901238	1	Spring, Flat	96	900597	1	Screw Thread Forming Sems 6-19 x 3/8
41	404435	1	Trigger	97	902238	1	Utility Hook Spring
42	900269	1	Chamber Lock Bar	98	902213	1	Pin Fuel Arm Pivot
43	404927	1	Spring, Trigger	99	902296	1	Fuel Door Assembly
44	401328	1	Retainer ring	100	905608	1	Label, <b>Paslode®</b> , Right
45	401461	2	Piston Ring	101B	905614	1	Silver Label, Right (ANZ)
46	404485	1	Piston Assembly, includes rings				
47	902551	1	Combustion Chamber Assembly				
48	404827	2	Pin				
49	905601	1	Bumper				
50	902239	1	Spring				
51	900934	2	Steel Ring, Sleeve				
52	905623	1	Sleeve Assembly, includes rings				

\*\* Make sure Warning Label (902608) is properly affixed.

Replace if necessary. Label is available through the Service Department.

- ▲ Apply Loctite 242 (Blue) Apply Loctite
- RC-620 (Green)
- > Denotes new change.

**SAFETY INSTRUCTIONS**

**WEAR EYE AND HEARING PROTECTION**



Always wear hearing protection and eye protection devices, including side shields when operating or working in the vicinity of a tool.

**⚠ WARNING**

All parts must be periodically inspected and replaced if worn or broken. Failure to do this can affect the tool's operation and present a safety hazard.

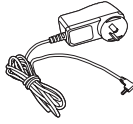
# ACCESSORIES

## Battery



(ANZ) PartNo. B20543A

## Battery Charger system (Australia/ New Zealand)



Battery Charger Kit Part No. B20543B  
Wall Mount Transformer(AUS) Part No. B20543C  
Battery Charger Base (AUS) Part No. 902661

## Paslode Impulse Lubricating Oil

Specially formulated for use in Paslode® Impulse tools.



(ANZ) Part No. B20544F

## 5/32" Hex Key

For clearing jams and servicing.



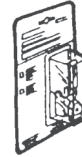
## No-Mar Work Contacting Element

Rubber tipped WCE to eliminate marring work surface.

(ANZ) Part No. B20544G

(Replacement Rubber No-Mar Tip.

Part No:403369)

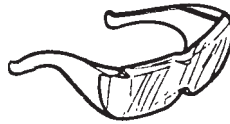


## Paslode Impulse Nailer Case



Part No. 905607

## Clear Safety Glasses



## Impulse Tool Cleaner/Degreaser

Ideal cleaner for all Paslode®



(ANZ) Part No. B20544L



USA

An Illinois Tool Works Co.  
155 Harlem Avenue  
Glenview, IL 60025  
[www.paslode.com](http://www.paslode.com)



Canada

120 Travail Road  
Markham, Ontario  
L3S 3J1  
800-387-6472  
[www.paslode.ca](http://www.paslode.ca)



Australia

PO Box 914  
Ingleburn, 1890  
[www.paslode.com.au](http://www.paslode.com.au)

A Division of ITW Australia Pty Ltd  
ABN 63 004 235 063



New Zealand

PO Box 100 303 NSMC  
Auckland, New Zealand  
[www.paslode.co.nz](http://www.paslode.co.nz)

A Division of ITW New Zealand Ltd