

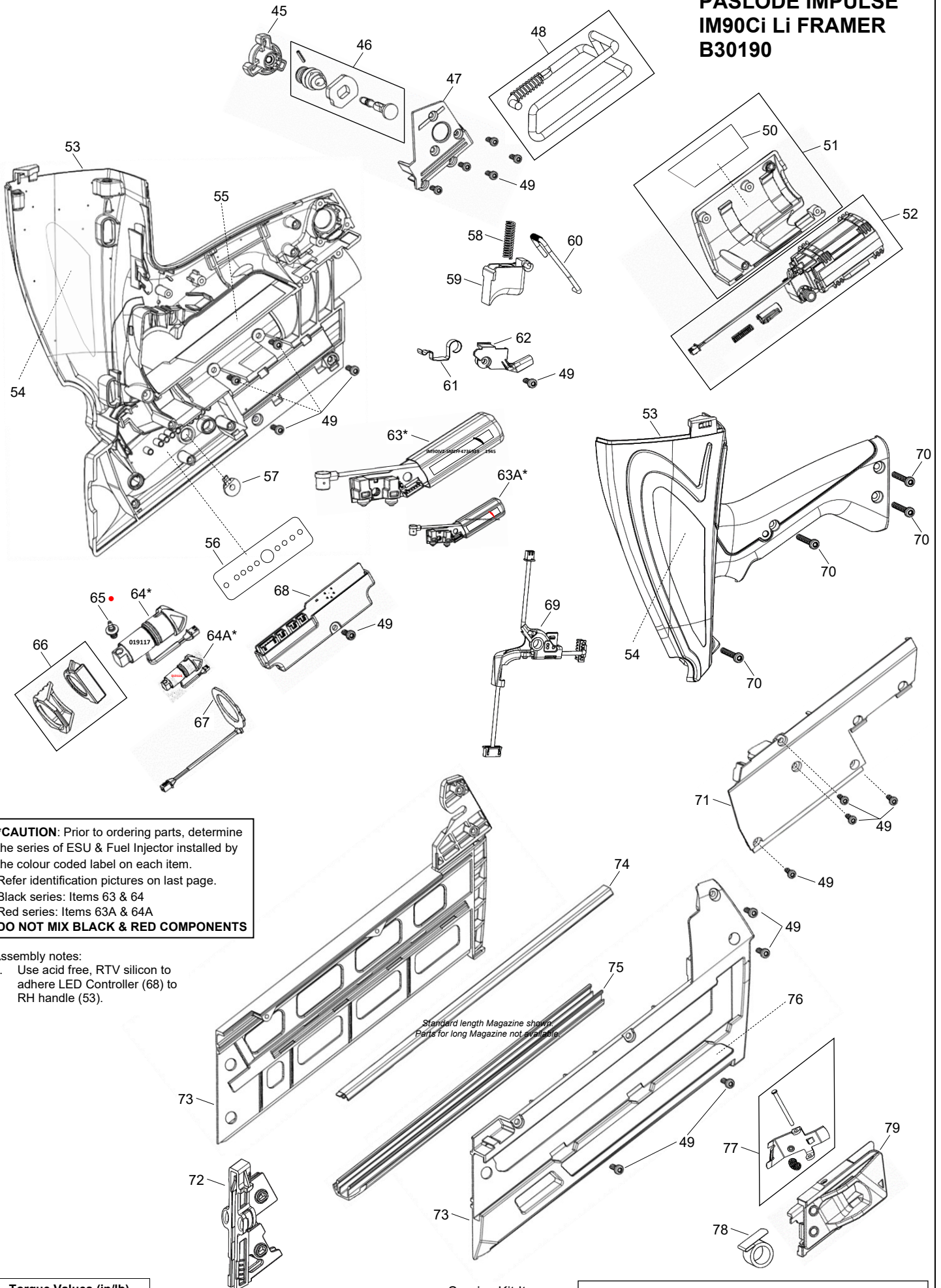


**IMPULSE IM90Ci
Li FRAMER
B30190**



ILLUSTRATED PARTS LIST

PASLODE IMPULSE IM90Ci Li FRAMER B30190



***CAUTION:** Prior to ordering parts, determine the series of ESU & Fuel Injector installed by the colour coded label on each item. Refer identification pictures on last page.
 Black series: Items 63 & 64
 Red series: Items 63A & 64A
DO NOT MIX BLACK & RED COMPONENTS

Assembly notes:

1. Use acid free, RTV silicon to adhere LED Controller (68) to RH handle (53).

Torque Values (in/lb)			
Item	Torque	Item	Torque
49	12-16	70	18-20

- Service Kit Item
- Loctite® 242

All parts sold as single items unless described as a pack, set or forms part of an assembly (multiple items defined within a box). A part with no item number is only available in an assembly.

PARTS LEGEND

PASLODE IMPULSE IM90Ci Li FRAMER

B30190

1	013797	4	Screw SHC M5 x 35	42	013812	1	Grommet, Housing/Fuel Line
* 2	019121	1	Cap & Filter Assembly (RPLS 013790, 013770, 013748)	43	013787	1	Flange, Retaining (with nose protector)
3	404702	1	Screw PH TF 6-32 x 3/8	■ 44	013813	4	Screw SHC M5 x 16
4	013808	1	Guide, Wires	45	013793	1	Knob, Magazine Release
■ 5	900596	5	Screw SEMS TX 8-32 x 7/16 (RPLS 405141)	46	013792	1	Ball & Pin Assembly, Magazine Release
6	019077	1	Motor Assembly, Fan	47	019081	1	Cover, Magazine Release Ball & Pin
7	013731	1	Spark Plug Assembly	48	019079	1	Belt/Rafter Hook & Spring Assembly
8	401356	1	Sleeve, Fan Motor (ALT 321590)	49	013798	19	Screw TX M4 x 12
9	013740	1	Cylinder Head	50	019083	1	Label, IM90Ci Lithium (Battery Cover)
* ● 10	321650	1	O-Ring, Cylinder Head (Black)	51	019092	1	Cover & Label Assembly, Battery
11	403167	1	Fan Blade Assembly (ALT 321660)	52	019086	1	Battery Receptacle Assembly
12	013749A	1	Combustion Chamber Assembly	53	019082	1	Handle Assembly (LH/RH)
13	013750	1	Air Dam	54	019115	1	Label, Handle Logo (LH/RH)
* 14	019073	1	Wear Plate, Chamber Lock	55	019087	1	Label, Data Plate
■ 15	013805	2	Screw PH TF M4 x 8	56	019118	1	Label, LED Power/Energy Lights
16	013781	2	Pin, Stop	57	019089	1	Start/Energy Button
17	336680	1	Ring, Retaining	58	013783	1	Spring, Trigger
* 18	013735	1	Driver & Piston Assembly	59	019119	1	Trigger
* ● 19	336670	2	Ring, Piston Seal	60	019084	1	Lock Bar, Chamber
* ● 20	013743	1	O-Ring, Sleeve	61	013734	1	Lever, Switch Contact
* 21	013778	1	Bumper	62	013785	1	Pivot Plate, Switch Contact Lever
22	013758	2	Stop, Rubber	63	019097	1	Electronic Spark Unit (ESU) (Black)
23	019071	2	Guide, Spring	63A	019096	1	Electronic Spark Unit (ESU) (Red)
24	013779	2	Spring	64	019117	1	Fuel Injector Assy (Black)
25	019072	2	Guide, Yoke	64A	019116	1	Fuel Injector Assy (Red)
26	013751	1	Sleeve Assembly	● 65	013739	1	Plug Connector, Fuel Injector/Fuel Tube
27	404423	1	Cover, Muffler (ALT 336580)	66	019088	1	Eject Button Assembly
● 28	404422	1	Muffler (ALT 336570)	67	019076	1	RFDI Antenna, Fuel Quantity
■ 29	900595	3	Screw TX 8-32 x 3/8 (M4 x 9)	68	019091	1	LED Controller
● 30	404424	1	Reed Valve (ALT 336560)	69	019078	1	Harness Assembly
▲ 31	404425	1	Reed Plate	70	013799	4	Screw TX M4 x 25
32	404426	1	Baffle, Exhaust	71	019085	1	Cover, Handle
33	013737	1	Pipe & Tube Assembly, Fuel Injection	72	013741	1	Shear Block
→ 34				73	013759	1	Magazine Halves (LH/RH) (Standard)
■ 35	013738	1	Bracket, Fuel Line	74	013763	1	Channel, Nail (Standard)
36	013757	1	Nose	75	013764	1	Cover Plate, Magazine (Standard)
■ 37	013796	2	Screw SHC M5 x 16	76	019099	1	Label, Reload
38	013744	1	Yoke	77	013762	1	Pusher/Button Assembly, Follower
39	013742	1	Knob Assy, Depth of Drive Adjustment	78	013767	1	Spring, Negator
40	019074	1	Probe	79	013761	1	Follower
41	013769	1	Housing	80	010015		AR Service Kit

* Normal Wear Items

● Included in Service Kit

■ Apply Loctite® 242 (Blue)

▲ Apply Permatex® Ultra-Blue Gasket Sealant 81724

→ New Change

AR As Required

Remove battery & nails before commencing service.



Use eye and ear protection when operating/testing tools.

Use eye protection when cleaning tools.

Use degreaser in a well ventilated area.



WARNING: All parts must be periodically inspected and replaced if worn or damaged. Failure to comply can affect the tool's operation and present a safety hazard.

ACCESSORIES

Battery

Part No. B20543A



Battery Charger system

(Australia/New Zealand)



Battery Charger Kit (Shown)

Part No. 018883

Power Cord

Part No. 018887

12V Car Adaptor

Part No. 900507

Carry Case

(Standard short magazine)

(Carry Case for optional long magazine unavailable)



Part No. 014977

(RPLS 014974)

No Mar Probe Assembly

Rubber tipped probe to eliminate marring work surface



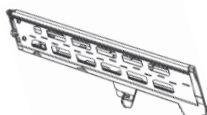
Replacement Tip Kit

(includes 2 tips, bracket, screw & nut + spanner)

Part No. 013211

Part No. 013256

Long Magazine



Part No. 013225

4mm Hex Key

For servicing and clearing jams.



Part No. 401331

T7 Torx Key

For Fan grub screw



Part No. 900183

Paslode Impulse

Lubricating Oil

Specially formulated for use in Paslode® Impulse tools.



Part No. B20544F

Impulse Tool

Cleaner/Degreaser

Recommended cleaner for all Paslode®



Part No. B20544L



Change Notes

Revision 1

Item	Part No.	Item Description	Change	Action/Change Description
21*	900456	Screw TX M4-15	Availability	POA ¹ 12, Combustion Chamber Assy 013749
29*	019791	Cap Label	Design	Replaced by 013791 (Non-procurable, per R2)
30*	013790	Grill Assembly		Replaced by 2, black one-piece Cap & Filter Assembly 019121 (2014 models only)
33*	013748	Filter		
34*	013770	Cap (orange)		
2	019121	Cap & Filter Assembly		Introduction of one-piece Cap, Grill & Filter Assy
5	405141	Screw TX SEMS	Manufacturing	Replaced by 900596

¹ Purchase on Assembly

*Item numbering per previous revision

Revision 2

Item	Part No.	Item Description	Change	Action/Change Description
85*	013231	Maintenance Kit	Availability	Discontinued (applicable to 2014 models only)

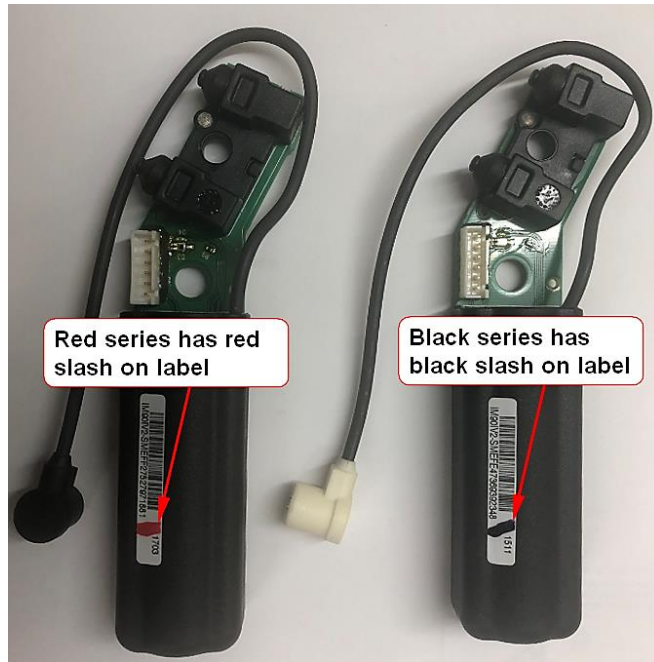
Revision 3

Item	Part No.	Item Description	Change	Action/Change Description
63*	019095	Battery Terminal	Availability	POA ¹ 52, Battery Receptacle Assembly 019086
93*	019093	Battery Pusher		
94*	019094	Battery Pusher Spring		
N/A	Various	Assemblies/Flag Notes	Schematic	Layout expanded Defined available ANZ assemblies Added Service Kit & Kit item flags Added Loctite [®] flags
		Parts/Notes	Parts Legend	Added missing PNs Added alternate EU PNs Added Service Kit & Kit item flags Updated PN changes Adopted conventional naming Updated Loctite [®] and item usage
		Accessories	Accessories	Defined available ANZ Accessories - Added No Mar replacement tip PN - Added T7 Torx Key reference - Updated Carry Case details

Revision 4

Item	Part No.	Item Description	Change	Action/Change Description
29*	013791	Cap Label (RPLS 019791)	Availability	Non procurable (Paslode logo embossed)
32*	019075	Belt/Rafter Hook Spring		POA ¹ 48, Belt/Rafter Hook & Spring Assy 019079
34*	405140	Screw TX 8-32 x 3/8 (M4 x 9)	Design	Replaced by 900595 (SEMS). Removed item number duplication – added qty to item 29
38*	401355	Retaining Ring (ALT 321610)		POA 6, Fan Motor Assembly 019077
39*	900470	Fan Motor Mount (ALT 334310)		
89*	014771	Fan Motor Ground Wire		
71*	013765	Cover Plate, Magazine (Long)		
73*	019101	Label, Magazine Reload (Long)		
76*	013760	Magazine Halves LH/RH (Long)		
78*	013766	Channel, Nail (Long)		
90*	014772	Tube, Fuel Injection (Rubber)		
12	013749	Combustion Chamber Assy		POA 34, Fuel Injection Pipe & Tube Assy 013737
43	013787	Retaining Flange	Design	Replaced by 013749A
N/A	Various	Assemblies/Flag Notes	Schematic	Note only: Due to manufacturing costs, the IM90i nose protector was removed from the Flange upon the release of the IM90Ci. AU still provides the flange with the nose protector. It is acceptable to install this version on the IM90Ci.
		Parts/Notes	Parts Legend	Complete layout re-design & re-numbering for clarity Added tool re-assembly notes Added ESU & Fuel Injector cautionary note Defined available ANZ assemblies
		ESU & Fuel Injector	Tips/Notes	Updated PN availability & re-numbered Added identification pictures

ESU Identification



Fuel Injector Identification

