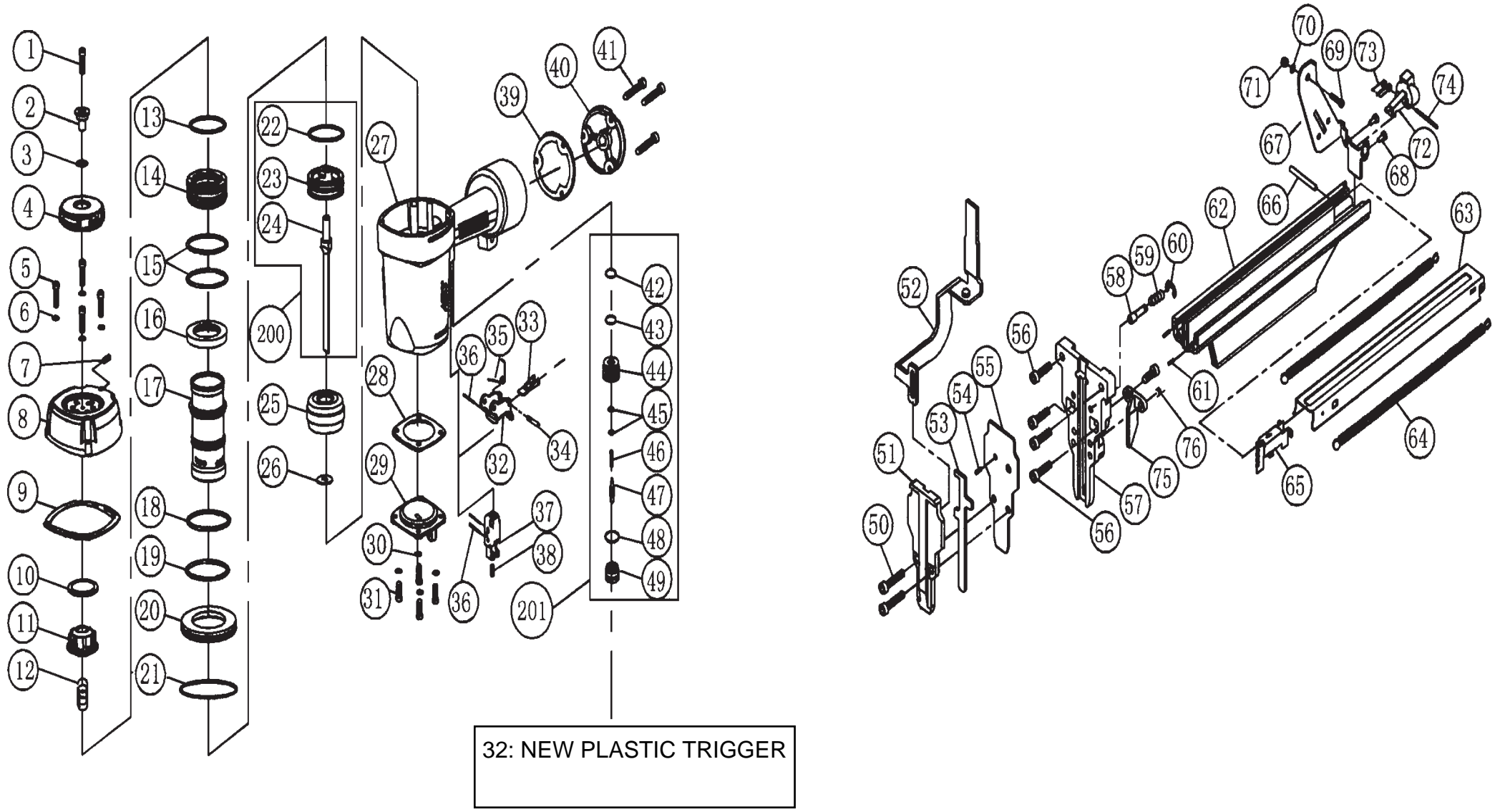


MACHINE CODE : D71030
DTN - 5064 14 GAUGE T NAILER 2 - 21/2"



MACHINE CODE / D71030

DTN-5064

PARTS LIST

14 GAUGE 2 - 2 1/2" CONSTRUCTION T NAILER

DATE APRIL, 2006

| ITEM | PART No | DESCRIPTION | QTY | ITEM | PART No | DESCRIPTION | QTY | ITEM | PART No | DESCRIPTION | QTY |
|------|---------------|-------------------|-----|------|-----------------|----------------------------|-----|------|---------------|-----------------------|-----|
| > 1 | ZDDCMD06300 | BOLT M6 * 30 | 1 | 31 | ZDDCMD06250 | BOLT M6 * 25 | 4 | 61 | ZDDCPP3010 | PIN 3 * 10 | 2 |
| 2 | ZDDBNBCF16000 | EXHAUST COVER | 1 | 32 | ZDDBNBCD01000 | MAIN TRIGGER | 1 | 62 | ZDDBNBCX01000 | MAGAZINE GUIDE BOARD | 1 |
| 3 | ZDDCW5101605 | WASHER | 1 | 33 | ZDDBNBCD02000 | SECONDARY TRIGGER | 1 | 63 | ZDDBNBCR01000 | MAGAZINE COVER | 1 |
| 4 | ZDDBNBCF06000 | EXHAUST COVER | 1 | 34 | ZDDCPJ3016 | PIN M3 * 16 | 1 | 64 | ZDDBNBCP05000 | SPRING | 2 |
| 5 | ZDDCMD05300 | BOLT M5*30 | 4 | 35 | ZDDBTCWD06000 | SPRING | 1 | 65 | ZDDBNBCP04000 | NAIL FEEDER | 1 |
| 6 | ZDDCW0050808 | WASHER W5 | 4 | 36 | ZDDCPJ3028 | PIN M3 * 28 | 2 | 66 | ZDDCPP4035 | PIN 4 * 35 | 1 |
| 7 | ZDDCML05060 | BOLT M5*6 | 1 | 37 | ZDDBNBCW15000-C | CONTACT TRIP GUIDE | 1 | 67 | ZDDBNBCW08000 | SUPPORT | 1 |
| 8 | ZDDBNBCA01000 | BODY CAP | 1 | 38 | ZDDBMAAW16000 | SPRING | 1 | 68 | ZDDCMD05100 | BOLT M5 * 10 | 2 |
| 9 | ZDDBNBCF14000 | GASKET | 1 | 39 | ZDDBNBCF13000 | GASKET | 1 | 69 | ZDDCMD06250 | BOLT M6 * 25 | 1 |
| 10 | ZDDBNBCA05000 | WASHER | 1 | 40 | ZDDBNBCF12000 | REAR BODY CAP | 1 | 70 | ZDDCW0061108 | WASHER W6 | 1 |
| 11 | ZDDBNBCA04000 | VALVE GUIDE | 1 | 41 | ZDDCMD05200 | BOLT M5 * 20 | 3 | 71 | ZDDCN1061 | NUT N6 | 1 |
| 12 | ZDDBNBCA02000 | SPRING | 1 | 42 | ZDDCOA162150 | O-RING | 1 | 72 | ZDDBMAAP41000 | MAGAZINE LOCK | 1 |
| 13 | ZDDCOA418260 | O-RING | 1 | 43 | ZDDCOA175150 | O-RING | 1 | 73 | ZDDBMAAP44000 | SPRING | 1 |
| >14 | ZDDBNBCA21001 | VALVE PISTON (AL) | 1 | 44 | ZDDBMCIE21000 | TRIGGER VALVE CAGE | 1 | 74 | ZDDCPP4028 | PIN 4*28 | 1 |
| 15 | ZDDCOA521260 | O-RING | 2 | 45 | ZDDCOA025140 | O-RING | 2 | 75 | ZDDBNBCW13000 | SHORT NAL ATTACHMENT | 1 |
| 16 | ZDDBNBCB08000 | CYLINDER SEAL | 1 | 46 | ZDDBMCIE61000 | SPRING | 1 | 76 | ZDDCMD05080 | BOLT M5 * 10 | 2 |
| 17 | ZDDBNBCB01000 | MAIN CYLINDER | 1 | 47 | ZDDBMCIE31000 | TRIGGER VALVE STEM | 1 | 200 | ZDDBNBCC00000 | DRIVER BLADE ASSEMBLY | 1 |
| 18 | ZDDCOA545290 | O-RING | 1 | 48 | ZDDCOA194250 | O-RING | 1 | 201 | ZDDBMCIE00000 | AIR SWITCH ASSEMBLY | 1 |
| 19 | ZDDCOA535350 | O-RING | 1 | 49 | ZDDBMCIE01000 | AIR SWITCH COVER | 1 | | | | |
| 20 | ZDDBNBCF11000 | CYLINDER RING | 1 | 50 | ZDDCMD05160 | BOLT M5 * 16 | 2 | | | | |
| 21 | ZDDCOA794310 | O-RING OR234-70N | 1 | 51 | ZDDBNBCW01000 | MAIN BIT GUIDE | 1 | | | | |
| 22 | ZDDCOP44 | O-RING T622014 | 1 | 52 | ZDDBNBCT01001 | UPPER WORK CONTACT ELEMENT | 1 | | | | |
| 23 | ZDDBNBCC02000 | MAIN PISTON | 1 | 53 | ZDDBNBCT02000 | LOWER WORK CONTACT ELEMENT | 1 | | | | |
| 24 | ZDDBNBCC01000 | DRIVER BLADE | 1 | 54 | ZDDCPS3012 | SPRING PIN 3 * 12 | 1 | | | | |
| 25 | ZDDBNBCB02001 | BUMPER | 1 | 55 | ZDDBNBCW03000 | CONTACT ARM LOCK | 1 | | | | |
| 26 | ZDDBNBCF02000 | STEEL DRIVE PLATE | 1 | 56 | ZDDCMD05140 | BOLT M5 * 14 | 4 | | | | |
| 27 | ZDDBNBCF01100 | BODY HOUSING | 1 | 57 | ZDDBNBCP22000 | SECONDARY BIT GUIDE | 1 | | | | |
| 28 | ZDDBNBCF15000 | GASKET | 1 | 58 | ZDDBNBCT08000 | LOCATED PIN | 1 | | | | |
| 29 | ZDDBNBCF03001 | NAIL DRIVING SEAT | 1 | 59 | ZDDBRAAV08000 | SPRING | 1 | | | | |
| 30 | ZDDCW2061015 | WASHER W6 | 4 | 60 | ZDDCCE25 | E - RING | 1 | | | | |

> = UPDATED PART