



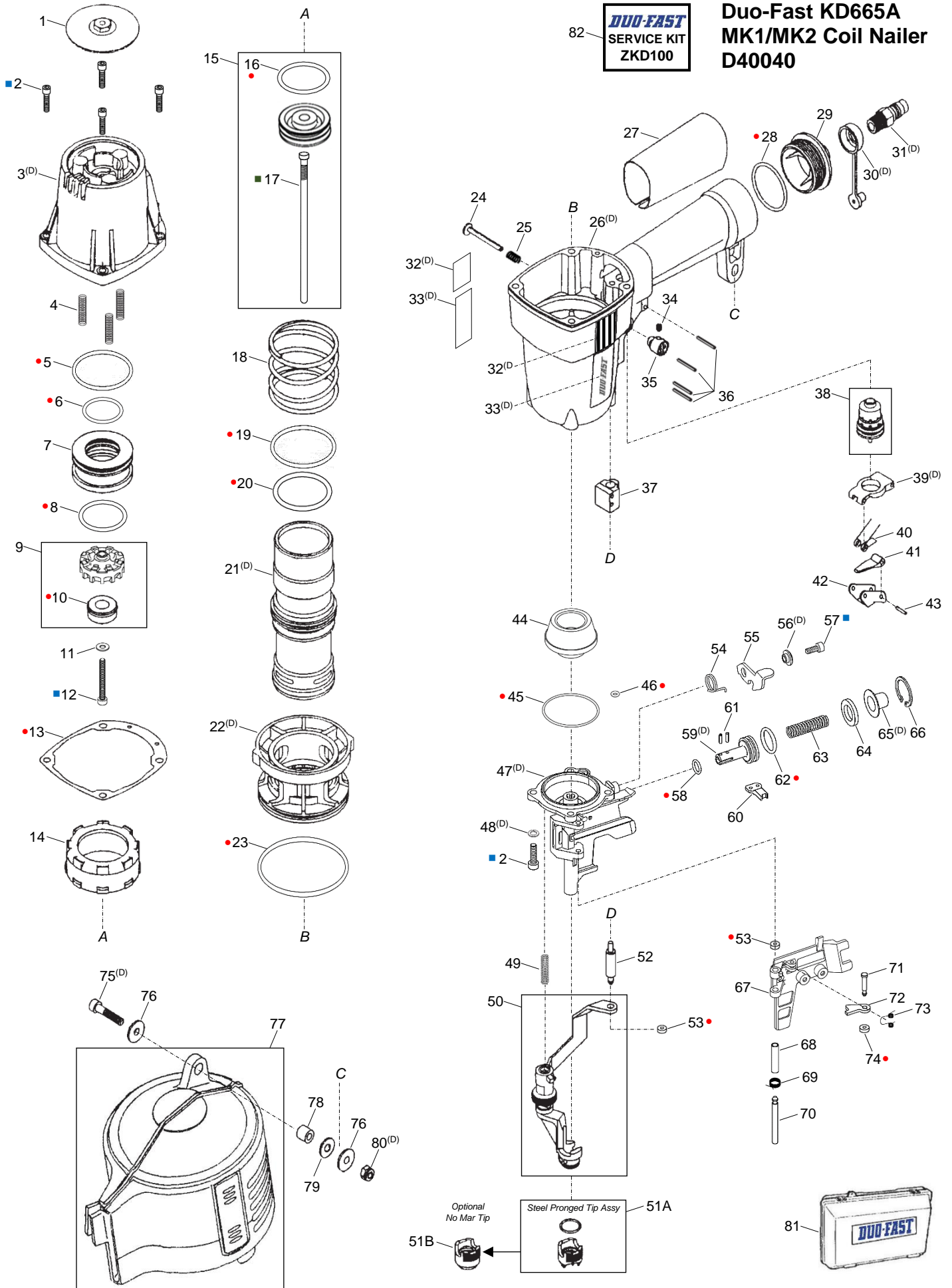
**PNEUMATIC KD665A
MK1 & MK2
COIL NAILER
D40040**



ILLUSTRATED PARTS LIST

DUO-FAST
SERVICE KIT
ZKD100

**Duo-Fast KD665A
MK1/MK2 Coil Nailer
D40040**



- Service Kit Item
- Loctite® 242
- Loctite® 620

All parts sold as single items unless described as a set etc., or forms part of an assembly (multiple items defined within a box). A part with no item number is only available in an assembly.

PARTS LEGEND

DUO-FAST KD665A MK1/MK2 COIL NAILER

D40040

1	ZMB120-7B	1 Exhaust Plate	43	ZKDN101-3	1 Pin, Roll
■ 2	ZMB103-3	8 Screw	* 44	ZMB110-5	1 Bumper (ALT 1424220-6)
3	ZMB420-1-60	1 Cap (RPLS ZMB320-1-60)	*● 45	ZKDN800-1	1 O-Ring
4	ZKDN120-5A	3 Spring	*● 46	ZKDN100-16	1 O-Ring
*● 5	ZMB100-5	1 O-Ring	→ 47		NP Nose
*● 6	ZMB100-4	1 O-Ring	→ 48		NP Washer, Spring (Discontinued)
* 7	ZMB120-2	1 Poppet	49	ZMB140-8	1 Spring
*● 8	ZMB100-6	1 O-Ring	50	ZMB247A	1 Probe & Lever Assembly
9	ZMB120-4P1	1 Exhaust Assembly	51A	ZMB249-1P1	1 Tip Assembly, Steel Pronged
→ 10	ZMB120-8A	1 Seal, Exhaust	* 51B	ZMB249-2	1 No Mar Tip
11	ZKDN106-1	1 Washer	52	ZMB112-5	1 Shaft, Lever
■ 12	ZMB103-2A	1 Screw	*● 53	ZKR106-5	2 Washer, Urethane
*● 13	ZMB120-6	1 Gasket	54	ZSA140-8	1 Spring
14	ZMB110-8	1 Seal, Cylinder	55	KN341008-8	1 Latch (RPLS ZMB141-1)
* 15	ZMB-215	1 Driver & Piston Assembly (RPLS ZMB115)	→ 56		NP Washer (Discontinued)
*● 16	ZMB100-3	1 O-Ring	■ 57	ZKDN103-7	1 Screw
■ 17	ZMB215-2-R4	1 Driver Blade	*● 58	ZKDN100-10	1 O-Ring
18	ZMB110-6	1 Spring	→ 59		NP Piston, Feed (Discontinued)
*● 19	ZMB100-1	1 O-Ring	60	ZMB143-4B	1 Pawl, Feed
*● 20	ZKDN800-2	1 O-Ring	61	ZJDE101-1	2 Pin, Roll (ALT 258032-3)
→ 21		NP Cylinder (Discontinued)	*● 62	ZMA100-10	1 O-Ring
→ 22		NP Bulkhead (Discontinued)	63	ZMB143-6	1 Spring
*● 23	ZMB100-2	1 O-Ring	64	ZMB143-7	1 Bumper, Feed Piston
24	ZMB112-4A	1 Pin, Trigger Mode Select	→ 65		NP Cap, Feed Piston (Discontinued)
25	ZSA112-6	1 Spring	66	ZMA104-1	1 Circlip
→ 26		NP Body (RPLS ZMB310-1-90) (Discontinued)	67	ZMB240-2	1 Gate
27	ZZA39	1 Grip Cover	68	ZMB140-7	1 Sleeve, Gate Hinge
*● 28	ZSA100-4	1 O-Ring	69	ZMB140-9	1 Spring, Gate
29	ZSA210-10-60	1 Cap, Inlet (Blue) (RPLS ZSA110-10-60 Black)	70	ZMB140-6	1 Pin, Gate Hinge
→ 30		NP Cap, Dust (Discontinued)	71	ZMB140-5	1 Pin, Tensioner
→ 31		NP Adaptor, Inlet (Discontinued)	72	ZMB140-4	1 Tensioner
→ 32		NP Side Cover (Discontinued)	73	ZMB140-3	1 Spring, Tensioner
→ 33		NP Label, Body Logo (Discontinued)	*● 74	ZKR106-4	1 Washer, Urethane
34	ZKT103-5	1 Screw	→ 75		NP Screw (Discontinued)
35	ZMB112-11	1 Knob, Trigger Mode Select	76	ZKDN130-5	2 Washer
36	ZMB101-1	4 Pin, Roll	77	ZMB530	1 Magazine Assy (RPLS ZMB230-1, ZMB230-2)
37	ZMB112-7	1 Guide, Lever Shaft	78	ZKDN130-4	1 Spacer
38	ZMB113	1 Valve Assembly, Trigger	79	ZMA106-2	1 Washer
→ 39		NP Plate, Trigger Valve	→ 80		NP Nut (Discontinued)
40	ZSP207-7J	1 Spring, Trigger	81	ZZB-54C	AR Carry Case, Duo-Fast Handy
41	ZMB112-3	1 Trip Lever	82	ZKD100	AR Service Kit
42	ZKDN112-2A	1 Trigger			

- * Normal Wear Items
- Included in Service Kit
- Apply Loctite® 242 (Blue)
- Apply Loctite® 620 (Green)
- New Change
- AR As Required



Use eye protection when cleaning tools.
Use eye and ear protection when operating/testing tools.
Use degreaser in a well ventilated area

Use only approved Paslode Compressor Tool Oil PN F27625.
Never use mineral based oils.
Oil tool daily with 4 to 6 drops via air inlet connection.
Heavy usage will require more frequent oiling.

Operating air pressure at the tool inlet: 550-760 kpa (80-110 psi).
Never exceed the maximum stated air pressure.
Regularly check the regulator and pressure gauge operation.

A water/oil trap must be installed on the regulator outlet and drained regularly.

Never use bottled air or gases such as oxygen to operate the tool.



WARNING: All parts must be periodically inspected and replaced if worn or damaged.
Failure to comply can affect the tool's operation and present a safety hazard.

Change Notes

Revision 1

Item	Part No.	Item Description	Change	Action/Change Description
3	ZMB320-1-60	Cap	Manufacturing	Replaced by ZMB420-1-60
26	ZMB310-1-90	Body Housing		Replaced by ZMB410-1-90 (Discontinued R2)
29	ZSA110-10-60	Cap, Inlet (Black)	Design	Replaced by ZSA210-10-60 (Blue)
31	Z20KPM	Inlet Adaptor	Availability	Non-procurable
33	95106658	Label, Body Logo		
55	ZMB141-1	Latch	Manufacturing	Replaced by KN341008-8
N/A	ZMB230-1	Magazine	Availability	Replaced by Magazine Assembly ZMB530
	ZMB230-2	Door, Magazine		
	ZMB230-3	Pin, Magazine Hinge		
	ZKDN104-3	E-Ring		

Revision 2

Item	Part No.	Item Description	Change	Action/Change Description
N/A	ZKDN100-13	O-Ring	Availability	POA ¹ (38) Trigger Valve Assembly ZMB113 or in Service Kit ZKD100 (82)
	ZKDN100-8			
	ZKDN700-5			
	ZKDN800-7			
	ZMB100-7			
	ZMB100-10			
	ZMB100-14			
	ZMB100-15			
	ZMB113-1	Housing		POA (38), Trigger Valve Assembly ZMB113
	ZMB113-2	Stem		
	ZMB113-3	Cover		
	ZMB113-4	Pin		
	ZMB113-5	Spring		
	ZSS100-3	O-Ring		POA (51A), Steel Pronged Tip Assembly ZMB249-1P1
	ZMB247-4	Ball Bearing		POA (50), Probe & Lever Assembly ZMB247A or (77), Magazine Assembly ZMB530
	ZMB247-5	Ring Spring		
	ZHLA130-8	Pin, Hinge		Non-procurable, POA (77), Magazine Assembly ZMB530
	ZMB333-2	Spring, Hinge Pin		
	ZMB334-2EX	Sleeve, Magazine		
	ZMB334-3EX	Shaft, Magazine		
ZMB334-4	Pin, Magazine			
ZMB334-5				
ZMB334-6	Circlip			
21	ZMB110-4	Cylinder	Discontinued	
22	ZMB110-3	Bulkhead		
26	ZMB410-1-90	Body Housing		
30	ZZA23	Dust Cap		
32	ZZA38	Side Cover Pad		
39	ZMB112-1A	Plate, Trigger Valve		
47	ZMB240-1A	Nose		
48	ZKR106-1	Spring Washer		
56	ZKDR104-1	Washer		
59	ZMB143-3	Feed Piston		
65	ZMA143-1	Feed Piston Cap		
75	ZKDN103-3	Screw		
80	Z3130J	Nut		
N/A	Various	Assemblies/Flag Notes	Schematic	Defined available assemblies Noted discontinued items (D) Added Service Kit & Kit item flags Added Loctite® flags Added Carry Case
N/A	Various	Parts/Notes	Parts Legend	Adopted conventional naming Removed discontinued items Updated Loctite® and item usage Added Service Kit & Kit item flags Added Carry Case

¹ POA - Purchase on Assembly