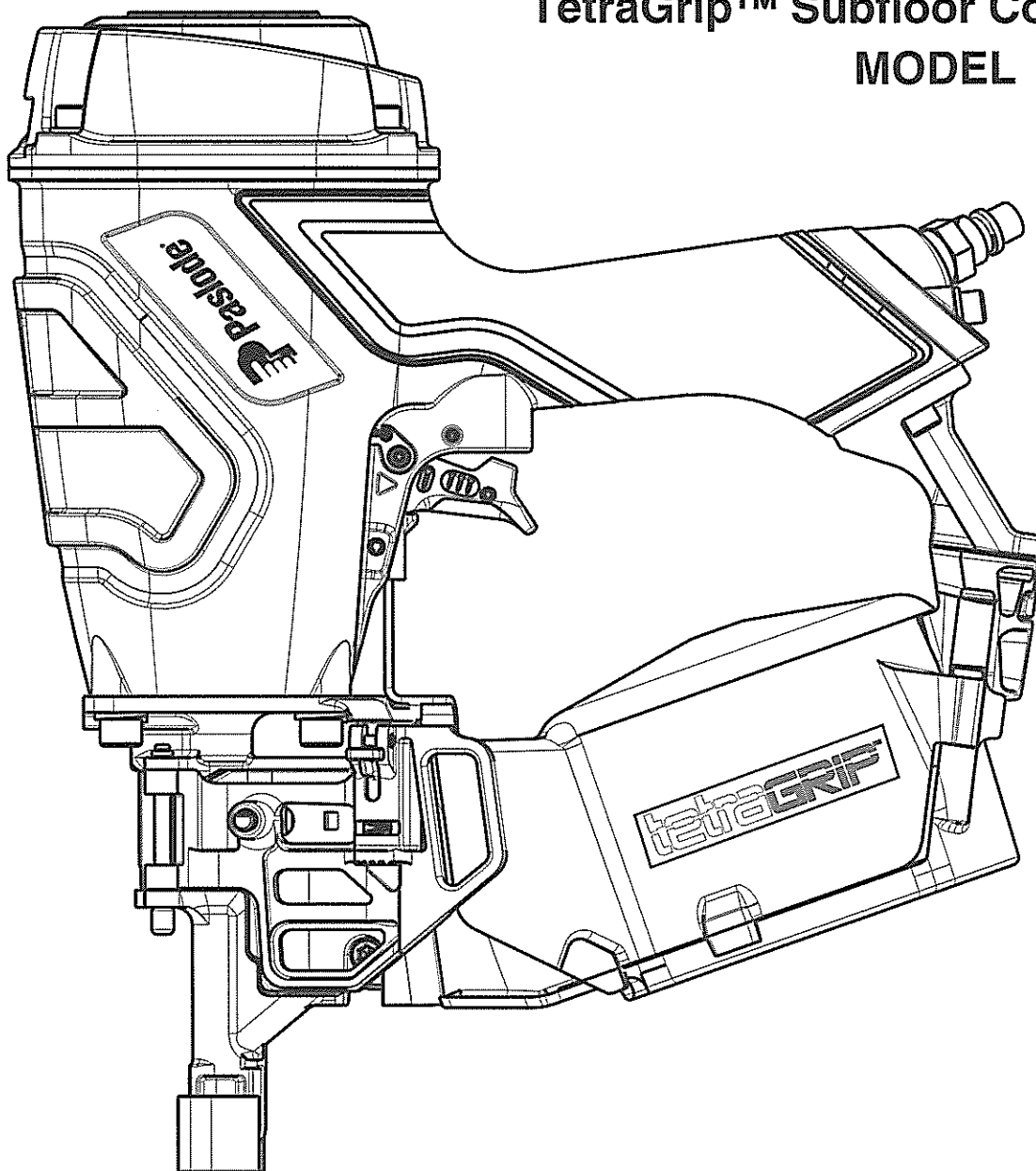


## TetraGrip™ Subfloor Coil Nailer MODEL PF237C

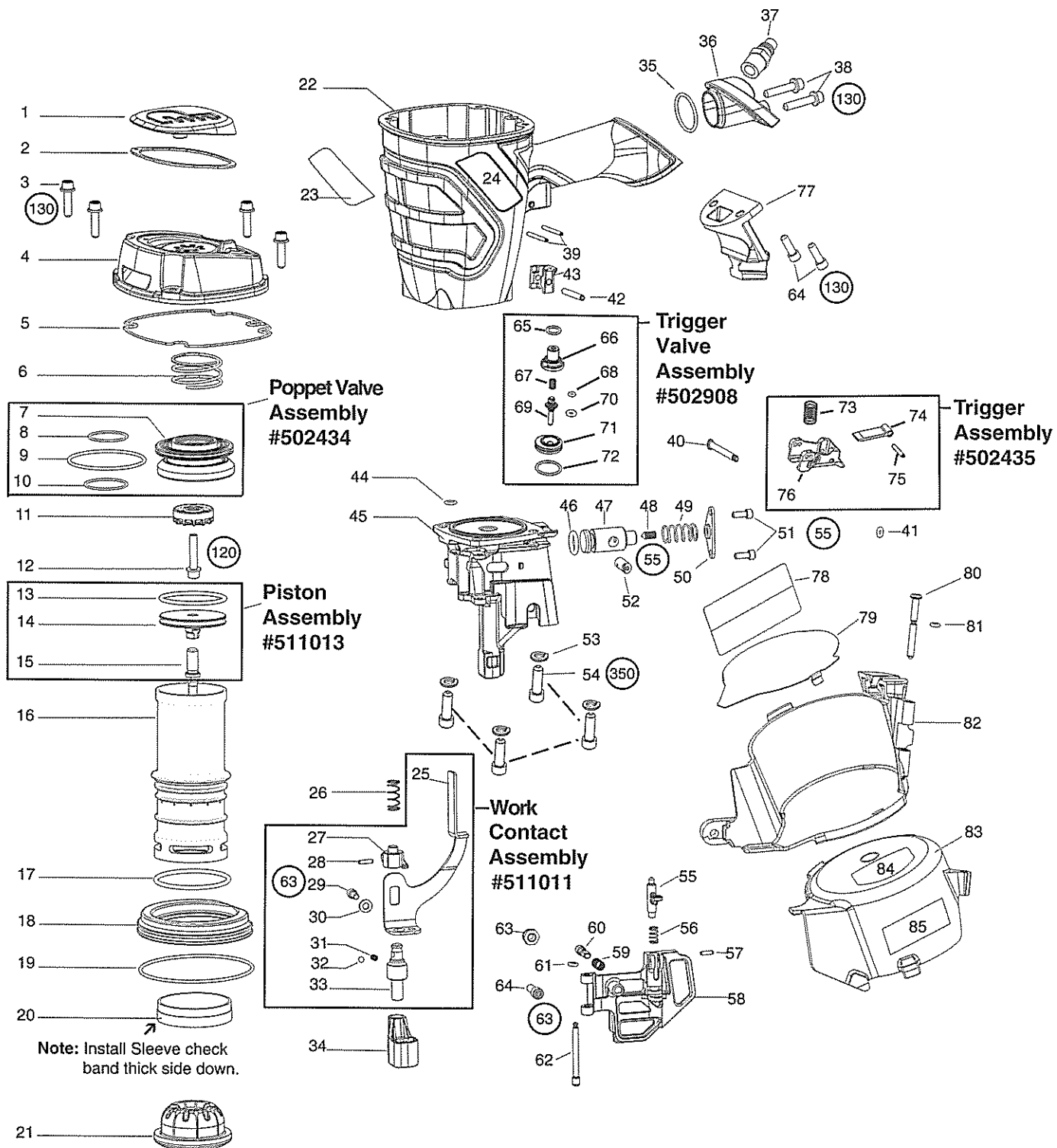


### **IMPORTANT!**

#### **DO NOT DESTROY**

It is the customer's responsibility to have all operators and service personnel read and understand this manual.

## **OPERATING MANUAL AND SCHEMATIC**



Torque Values  
IN/LBS

# PARTS LEGEND

# Subfloor Coil Nailer

PF237C

503000

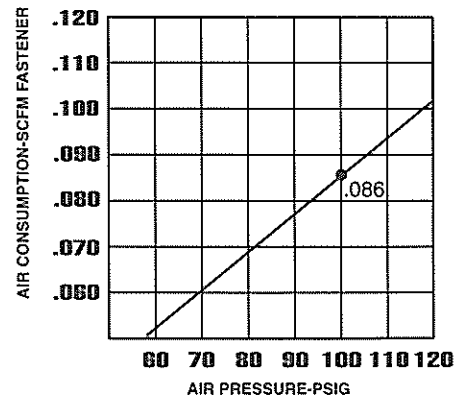
1	502004	1	Air Deflector	43	502033	1	Work Contact Element Guide
* 2	502062	1	Air Deflector Gasket	* 44	393801	1	O-Ring-007
3	501299	4	S.H.C.S. 1/4-20 x 1"	45	503051	1	Nose
4	502003	1	Top Cap	* 46	263087	1	O-Ring-207
* 5	502013	1	Top Cap Gasket	47	503052	1	Feed Piston
6	123984	1	Valve Spring	48	503053	1	Set Screw 1/4-20 x 1/2"
* 7	502434	1	Poppet Valve Assembly	49	1015365	1	Compression Spring .3 x .63
* 8	502859	1	O-Ring-026	50	503046	1	Feed Spring Retainer
* 9	211664	1	O-Ring-144	51	009037	2	S.H.C.S. 10-32 x 1/2"
* 10	198028	1	O-Ring-028	52	503050	1	Feed Pawl
11	502056	1	Exhaust Seal Assembly	53	095417	4	Lock Washer, 5/16"
● 12	501300	1	S.H.C.S.1/4-20 x 1-1/4"	▲ 54	009016	4	S.H.C.S., 5/16-18 x 1"
* 13	092971	1	O-Ring, Piston	55	503047	1	Gate Latch
14	501337	1	Piston	56	1015367	1	Compression Spring .3 x .88
■ * 15	503031	1	Driver Blade	57	419648	1	Roll Pin, 1/8 x 7/16"
16	511119	1	Sleeve	58	503057	1	Gate
17	092235	1	O-Ring-229	59	1015364	1	Compression Spring,.3 x .63
* 18	502007	1	Sleeve Flange	60	503048	1	Backup Pawl
* 19	401985	1	O-Ring-154	* 61	196352	1	O-Ring, OR-005-70L
* 20	502010	1	Sleeve Check Band	* 62	1015362	1	Gate Pin
* 21	500866	1	Bumper	63	442681	1	Lock Nut 1/4-20
22	503064	1	Housing, Overmolded Assy.	64	009041	3	S.H.C.S., 1/4-20 x 3/4"
23	502035	1	Housing Label, Right	* 65	197913	1	O-Ring-012
24	502034	1	Housing Label, Left	66	502044	1	Upper Valve Spool
25	503049	1	Upper Work Contact Element	67	502059	1	Compression Spring, .24 x .375
26	501071	1	Spring, W.C.E	* 68	196345	1	O-Ring-006
27	503069	1	Detent Body	69	502045	1	Valve Pin
28	404361	1	Roll Pin, 1/8 x 1/2"	* 70	1015358	1	O-Ring-105
29	004224	1	S.H.C.S. 10-32 x 3/8"	71	502043	1	Lower Valve Spool
30	503163	1	Flat Washer #10	* 72	092747	1	O-Ring-018
31	502061	1	Detent Compression Spring	73	502060	1	Compression Spring, .437 x .84
32	502049	1	Ball, Detent	74	502040	1	Trip Lever
33	511015	1	Thumbwheel Adjustment	75	091866	1	Roll Pin, 1/87 x 3/4"
34	503067	1	Lower Work Contact Element	76	502053	1	Trigger
* 35	417147	1	O-Ring-123	77	502909	1	Magazine Bridge
36	502005	1	End Plug, Housing	78	503084	1	Model Label
37	503083	1	3/8" Male Air Fitting	79	503054	1	Canister Wear Plate
38	501300	2	S.H.C.S. 1/4-20 x 1-1/4"	80	1015354	1	Canister Pin
39	403796	2	Roll Pin 1/8 x 1-1/4"	* 81	1015358	1	O-Ring-105
40	502041	1	Trigger Pin	82	1015351	1	Canister Base
* 41	502042	1	O-Ring-004	83	1015352	1	Canister Cover
42	502723	1	Roll Pin 3/16 x 1-1/4"	** 84	503085	1	Warning Label
				85	503087	1	Label

- \* Denotes Normal Wear Items
- \*\* Make sure Warning Label (Part No.503085) is properly affixed. Replace if necessary. Label available at no charge through the Service Department.
- ▲ Apply Loctite® 242 (Blue) Part No. 093500
- Apply Loctite® 620 (Green) Part No. 401491
- Apply Loctite® 271 (Red) Part No. 093422
- Denotes New Change

### ▲ WARNING

All parts must be periodically inspected and replaced if worn or broken. Failure to do this can affect the tool's operation and present a safety hazard.

AIR CONSUMPTION CHART



# ACCESSORIES

## Lubricants and Loctite®

Loctite® 242 (Blue)

Lubricating Oil 16 oz.

Lubricating Oil with Antifreeze 8 oz.

Chemplex® 710 Lubricant 1lb.

Lubricant 5 gram tube



Part No. 093500

Part No. 403720

Part No. 219090

Part No. 403734

Part No. 219188

---

## Tool Cleaner

Ideal cleaner for all Paslode® tools.



Part No. 219348

---

## Safety Glasses

Clear



Part No. 401382

---

For additional information on Paslode® products, visit our website at [www.paslode.com](http://www.paslode.com).

For technical support call 1-800-222-6990.

To purchase parts and accessories, visit [www.itwconstructionparts.com](http://www.itwconstructionparts.com).



An Illinois Tool Works Company  
888 Forest Edge Drive  
Vernon Hills, Illinois 60061-3105