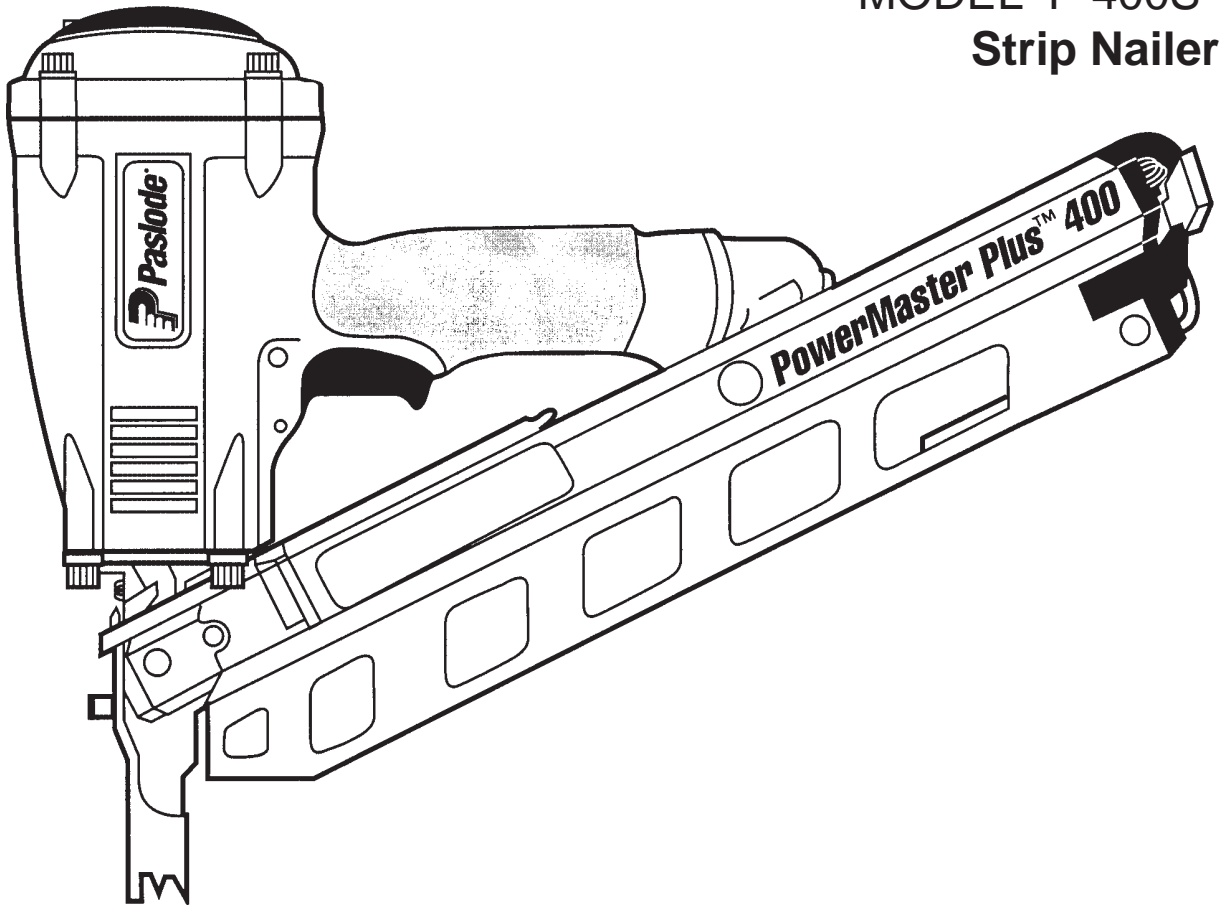




MACHINE CODE : B20440

PowerMaster Plus™ 400
MODEL F-400S
Strip Nailer



PowerMaster Plus™ 400

**IMPORTANT!
DO NOT DESTROY**

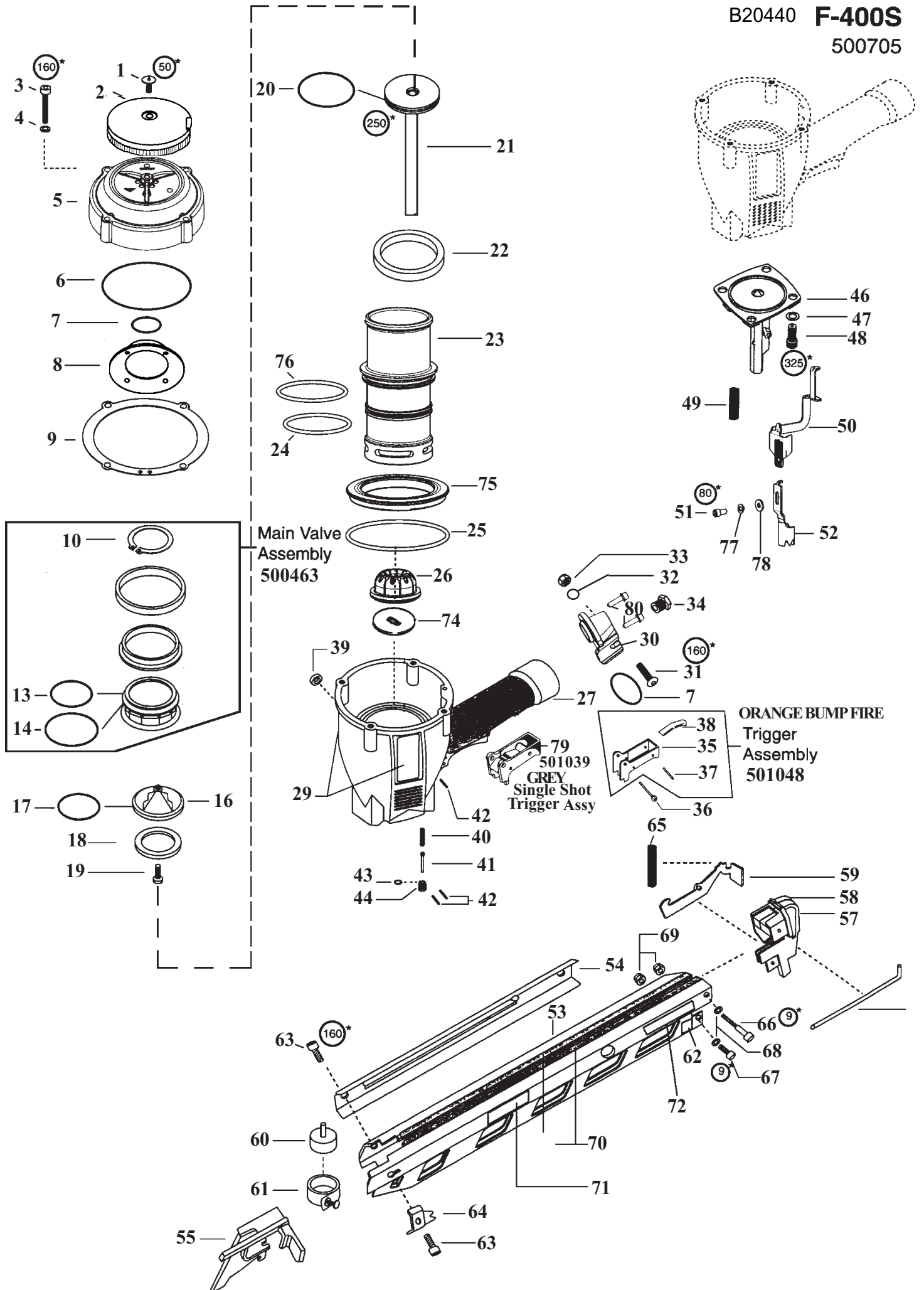
Always refer to safety and maintenance manuals #405218 and #405219 for detailed information on this tool. It is the customers responsibility to have all operators and service personnel read and understand this information.

**TOOL SCHEMATIC AND
PARTS**

PowerMaster Plus™ 400

B20440 F-400S

500705



PARTS LEGEND POWERMASTER PLUS F-400S, 500705

> ▲ 1	501686	1	T.H.S.C.S. 1/4 - 20 x 1/2"	40	097748	1	SPRING VALVE PIN
> 2	501760	1	BRUSH SILENCER	41	097746	1	VALVE PIN
3	091873	4	S.C.H.C.S. 1/4 -20 x 1/2"	42	071297	3	ROLL PIN 1/8 X 1/8"
4	092757	4	FLATWASHER	* 43	092174	1	O-RING VALVE BODY
5	500707	1	CAP	44	401958	1	VALVE BODY
* 6	500461	1	O-RING	46	500712	1	NOSE 30
* 7	092042	2	O-RING	47	095417	4	LOCK WASHER 5/16
8	500407	1	SPRING MAIN VALVE	▲ 48	009016	4	S.H.C.S. 5/16-18 X 1"
* 9	501001	1	GASKET CAP	49	501006	1	SPRING W.C.E.
10	406041	1	RETAINING RING	50	501363	1	UPPER W.C.E.
				51	091618	1	S.H.C.S.1/4-20 X 1/2"
* 13	091208	1	O-RING	52	500713	1	LOWER W.C.E.
* 14	401950	1	O-RING	53	501491	1	MAGAZINE WITH WEAR STRIPS
				54	500717	1	NAIL COVER
16	500454	1	POST	55	500531	1	FOLLOWER
* 17	095432	1	O-RING	> 57	501606	1	END CAP MAGAZINE-LF
18	500453	1	BUMPER POST	> 58	501607	1	END CAP MAGAZINE-RT
19	402906	1	B.H.S.C.S. - 10-32 X 5/8"	59	500848	1	LATCH
* 20	092971	1	O-RING PISTON	60	501046	1	DRUM PIN ASSEMBLY
* 21	500709	1	PISTON ASSEMBLY	61	500513	1	NEGATOR ASSEMBLY
22	402011	1	SEAL SLEEVE	62	500839	1	NAMEPLATE
23	500710	1	SLEEVE	▲ 63	404904	2	SCREW 1/4 - 28 X 5/8"
* 24	092235	1	O-RING SLEEVE	64	500509	1	FRONT BRACKET
* 25	501002	1	O-RING	65	501028	1	SPRING LATCH
* 26	500866	1	BUMPER	66	501026	1	S.H.C.S. 8/32 X 2"
27	501286	1	HOUSING	67	066840	1	S.H.C.S. 8/32 X 3/4"
28	501023	1	REMOVED	68	404414	2	FLATWASHER #8
29	501333	1	LABEL HOUSING - LEFTSIDE	69	404325	2	STOP NUT
	501334	1	LABEL HOUSING - RIGHTSIDE	70	500520	2	WEAR STRIP
30	501219	1	END CAP HOUSING	** 71	500458	1	WARNING LABEL
31	500516	1	B.H.S.C.S. - SPECIAL	72	500838	1	LOGO LABEL
32	404274	1	FLATWASHER	> 73	500199	1	REMOVED
33	500525	1	LOCKNUT 5/16 - 24	74	500729	1	BLADE SEAL
34	091622	1	REDUCING PIPE BUSHING	75	500779	1	FLANGE SLEEVE
35	501010	1	TRIGGER	76	500249	1	O-RING SLEEVE
36	402669	1	PIN TRIGGER	77	002187	1	LOCK WASHER
37	501009	1	SPIROL PIN	78	404800	1	FLAT WASHER
38	501008	1	LEVER BOTTOM TRIP	79	501039	1	SEQUENTIAL TRIGGER GREY
39	402668	1	RETAINING RING	80	501299	2	S.H.C.S. 1/4-20 X 1"

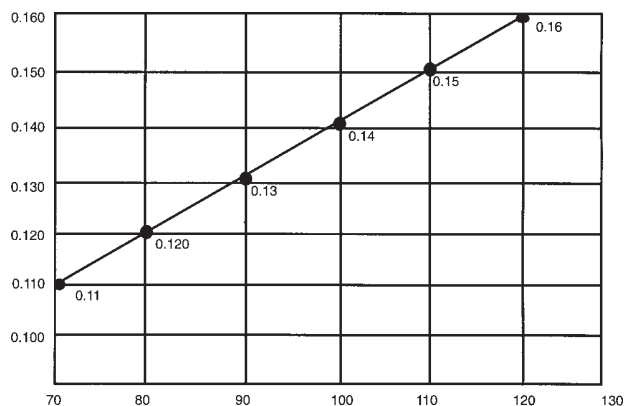
* Denotes Normal Wear Items

** Make sure Warning Label (Part No. 500458) is properly affixed. Replace if necessary. Label available at no charge through the Service Department.

▲ Apply Loctite 242 (Blue) Part No. 093500



> Denotes New Change



WARNING

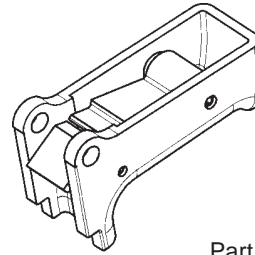
All parts must be periodically inspected and replaced if worn or broken. Failure to do this can affect the tool's operation and present a safety hazard.

Note: For optimum performance Paslode recommends the use of a 3/8" Male fitting.

ACCESSORIES

BUMP FIRE Kit

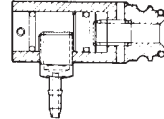
This special attachment is designed for "contact" firing).



Part No.501048

Remote Fire Valve

This valve via a positive air signal allows a machine mounted tool to be operated from an automatic air valve or foot pedal system.



Part No. 1X0713

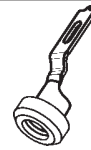
Trigger Valve Kit

Repairs trigger valve air leaks.

Part No. 219224

No-Mar Work Contacting Element

W.C.E. with a rubber tip prevents you from marring wood surfaces.



Part No.500903

No-Mar Tip

Replacement tip for No-Mar Work Contacting Element #500903.



Part No. 501022

Lubricant

Lubricating Oil 16 oz.

Part No. F27625

Degreaser Cleaner

Ideal cleaner for all Paslode tools.

Part No. B20544L

SAFETY INSTRUCTIONS

WEAR EYE AND HEARING PROTECTION

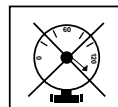


Always wear hearing protection and eye protection devices, including side shields when operating or working in the vicinity of a tool.

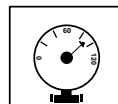


Never use any bottled air or gases such as oxygen to operate the tool since they could cause the tool to explode.

DO NOT EXCEED MAXIMUM RECOMMENDED AIR PRESSURE



Operate the tool using only the recommended air pressure. Do not exceed the maximum air pressure marked on the tool. Be sure the air pressure gauge is operating properly and check it at least twice a day.



An Illinois Tool Works Company
888 Forest Edge Drive
Vernon Hills 60061-3105