



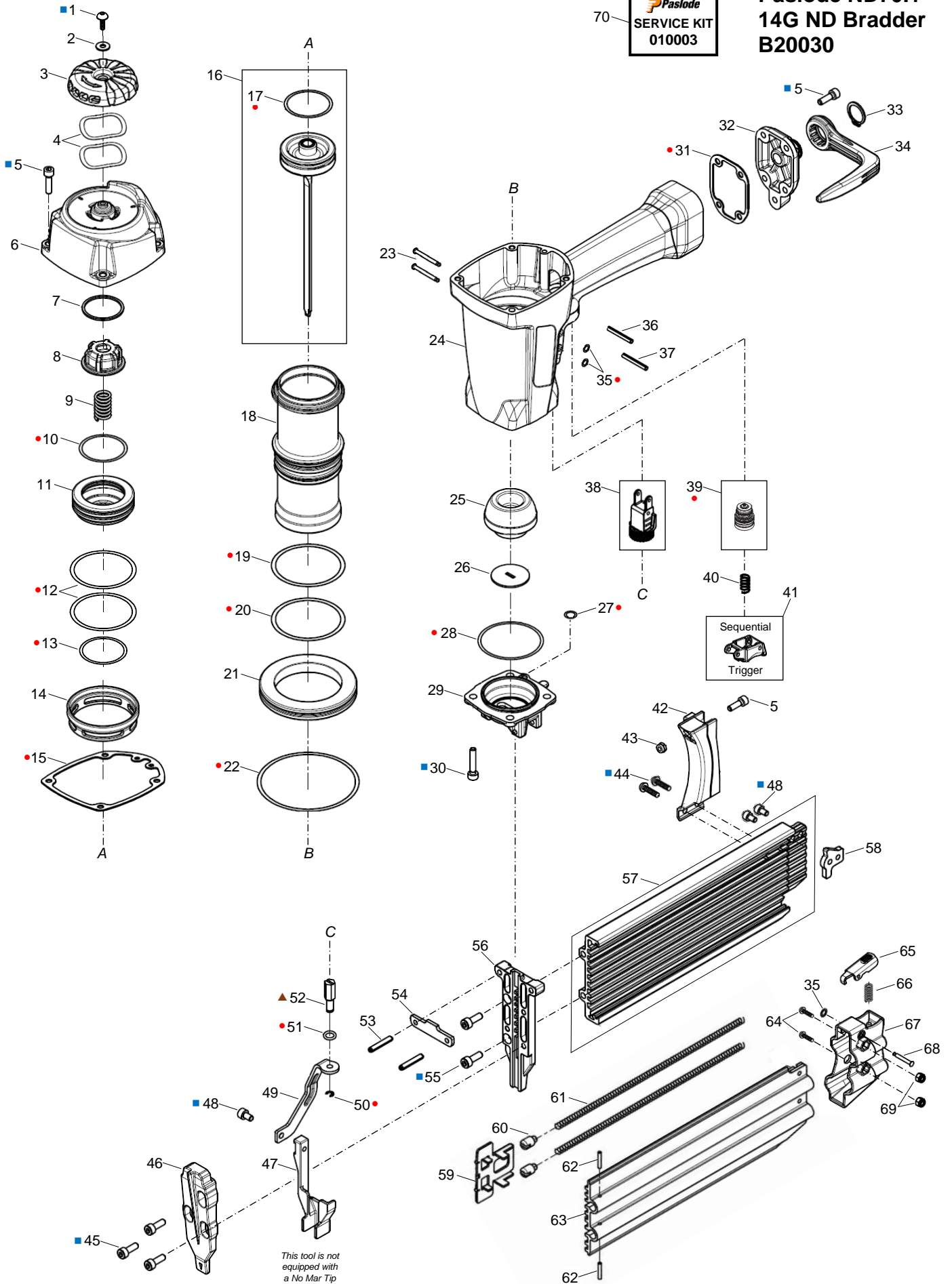
**PNEUMATIC ND70.1
14G ND BRADDER
B20030**



ILLUSTRATED PARTS LIST

70 **Paslode**
SERVICE KIT
010003

**Paslode ND70.1
14G ND Bradder
B20030**



- Service Kit Item
- Loctite® 242
- ▲ Grease

All parts sold as single items unless described as a set etc., or forms part of an assembly (multiple items defined within a box). A part with no item number is only available in an assembly.

PARTS LEGEND

PASLODE ND70.1 ND BRADDER

B20030

■ 1	720478	1 Bolt UH	37	720475	1 Pin, Roll (Long)
2	721058	1 Washer, Flat	38	720422	1 Depth of Drive Assembly
3	720408	1 Cover, Exhaust	*● 39	41607301A	1 Trigger Valve Assembly (RPLS 720404, 23303804A)
4	720482	2 Washer, Wave	40	720407	1 Spring, Trigger
■ 5	720458	9 Bolt SHC	41	720420	1 Trigger, Sequential Fire (Grey)
6	720409	1 Cap	42	720431	1 Bracket
7	720417	1 Spacer	43	721053	1 Nut, Lock
8	720412	1 Stop, Piston	■ 44	720300	2 Bolt SHC
9	720410	1 Spring	■ 45	720455	3 Bolt SHC
*● 10	720465	1 O-Ring	46	720443	1 Plate, Nose (Driver Guide)
11	720411	1 Piston, Main Valve	47	720445	1 Probe
*● 12	720469	2 O-Ring	■ 48	720454	3 Bolt SHC
*● 13	720467	1 O-Ring	49	720446	1 Lever, Safety
14	720413	1 Collar	● 50	905588	1 E-Ring (RPLS 720335, ER0300R)
*● 15	720414	1 Gasket, Cap	*● 51	720462	1 O-Ring
* 16	720439	1 Driver & Piston Assembly	52	720423	1 Shaft, Depth of Drive Adjustment
*● 17	720466	1 O-Ring, Piston	53	720476	2 Pin, Roll
18	720415	1 Cylinder	54	720444	1 Plate, Nose Support
*● 19	720468	1 O-Ring	■ 55	720457	2 Bolt SHC
*● 20	720470	1 O-Ring	56	720428	1 Nose
21	720416	1 Ring, Bulkhead	57	720429	1 Magazine Assembly
*● 22	720472	1 O-Ring	58	720434	1 Stop, Magazine
23	720427	2 Pin, Step	59	720435	1 Pusher
24	720419	1 Body Housing	60	720400	2 Guide Block, Spring
* 25	720418	1 Bumper	61	720440	2 Spring
26	720438	1 Seal Washer, Driver	62	720473	2 Pin, Roll
*● 27	919017	1 O-Ring →(RPLS 720461)	63	720430	1 Cover, Magazine
*● 28	720471	1 O-Ring	64	720477	2 Bolt UH (RPLS 720485)
29	720447	1 Flange, Nose	65	720432	1 Latch, Magazine
■ 30	720459	4 Bolt SHC	66	720421	1 Spring, Latch
*● 31	720424	1 Gasket, Inlet Cap	67	720436	1 Cover, Magazine
32	720425	1 Cap, Inlet (Orange)	68	720437	1 Pin, Step
33	720453	1 Circlip	69	720033	2 Nut, Lock (RPLS 720330)
34	720426	1 Hook, Belt	70	010003	AR Service Kit
*● 35	OR01919N	3 O-Ring (RPLS 721020)			
36	720474	1 Pin, Roll (Short)			

- * Normal Wear Items
- Included in Service Kit
- Apply Loctite® 242 (Blue)
- ▲ Apply grease to threads
- New Change
- AR As Required

Accessories supplied in box

- 1 x 30ml Oil
- 1 x 3mm Hex Key
- 1 x 5mm Hex Key
- 1 x Safety Glasses

Tool supplied with 1/4 NTP Nitto® style air adaptor (installed)

Optional accessories:

Universal nylon tool carry bag PN 502934



- Use eye protection when cleaning tools.
- Use eye and ear protection when operating/testing tools.
- Use degreaser in a well ventilated area

Use only approved Paslode Compressor Tool Oil PN F27625.

Never use mineral based oils.

Oil tool daily with 4 to 6 drops via air inlet connection.

Heavy usage will require more frequent oiling.

Operating air pressure at the tool inlet: 550-760 kpa (80-110 psi).

Never exceed the maximum stated air pressure.

Regularly check the regulator and pressure gauge operation.

A water/oil trap must be installed on the regulator outlet and drained regularly.

Never use bottled air or gases such as oxygen to operate the tool.



WARNING: All parts must be periodically inspected and replaced if worn or damaged. Failure to comply can affect the tool's operation and present a safety hazard.

Change Notes

Revision 1-3

Item	Part No.	Item Description	Change	Action/Change Description
33	720425	Cap, Inlet (Black)	Design	Colour changed to orange. No PN change
53	720429	Magazine	Format	Updated assembly item reference (*64A)
N/A	Various	Part Numbers	Parts Legend	Corrected Part Numbers
N/A	Various	Bolt UH	Schematic	Added Loctite® flags

Revision 4

Item	Part No.	Item Description	Change	Action/Change Description
*31	720017	O-Ring	Availability	POA ¹ 39, Trigger Valve Assembly 41607301A
*32	720402	Trigger Valve Body (inner)		
*33	720234	O-Ring		
*34	720235	O-Ring		
*35	720405	Trigger Valve Piston		
*36	720463	O-Ring		
*37	720242	O-Ring		
*38	720277	Spring		
*39	720406	Spool Valve		
*40	720460	O-Ring		
*41	720464	O-Ring		
*42	720403	Trigger Valve Body (outer)		
*65	720433	Nail Guide Liner		POA 52, Magazine Assembly 720429
27	720461	O-Ring	Format	Replaced by 919017
35	721020	O-Ring		Replaced by OR01919N
39	720404	Trigger Valve Assembly		Replaced by 23303804A (Superceded)
	23303804A		Manufacturing	Replaced by 41607301A
50	720335	E-Ring	Format	Replaced by ER0300R (Superceded)
	ER0300R			Replaced by 905588
64	720485	Bolt UH		Replaced by 720477 (PN duplication)
69	720330	Lock Nut		Replaced by 720033 (PN duplication)
N/A	Various	Assemblies/Flag Notes	Schematic	Format updated Defined available assemblies Added Service Kit & Kit item flags Added Loctite® flags
N/A	Various	Parts/Notes	Parts Legend	Format updated Adopted conventional naming Updated Loctite® and item usage Added Service Kit & Kit item flags

¹ POA - Purchase on Assembly

*Item numbering per previous revision