

MACHINE CODE
A10337

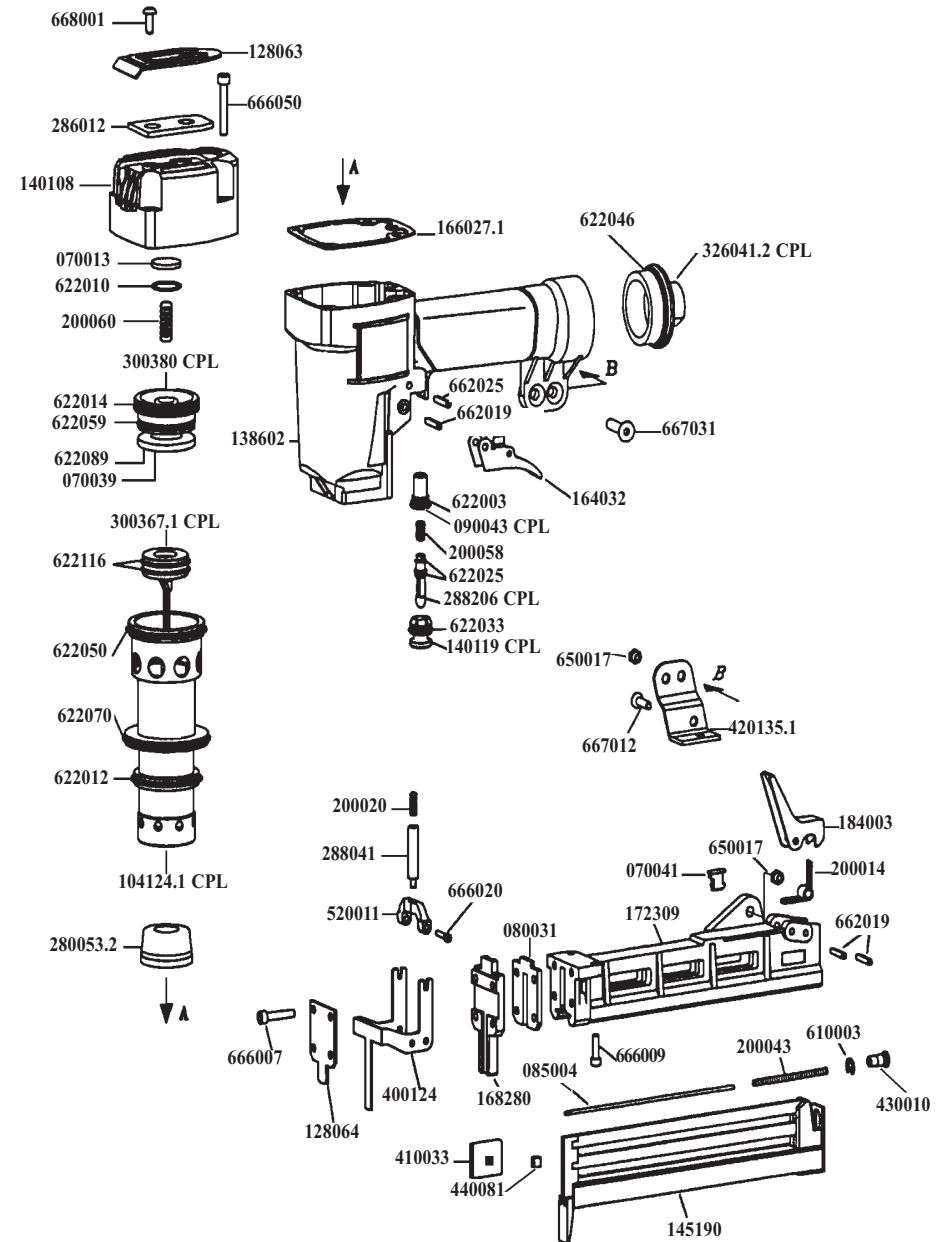
MODEL
P3C 90 - 40

PARTS LIST

ESP	MACHINE CODE	DESC.
0	A10337	P3C 90-40



CODE	QTY	DESCRIPTION	CODE	QTY	DESCRIPTION	
070013	R	1	070013	R	3	LOW SELF LOCK NUT
070039	R	1	070039	R	3	ELAST SPIR HEAVY PIN 4X26
070041	R	1	070041	R	1	ELAST SPIR HEAVY PIN 4X22
080031	1	DRIVER REST	080031	R	4	SCREW TCEI UNC 10 24X7/8
085004	1	GUIDE BAR	085004	R	2	SCREW TCEI UNC 10 24X1-1/4
090043	1	CPL VALVE BUSH	090043	R	2	SCREW TCEI M4X10
104124.1	1	CPL CYLINDER	104124.1	R	4	SCREW TCEI UNC 10-24X3/4
128063	1	COVER	128063	R	1	SCREW TSEI M6X16
128064	1	SAFETY COVER	128064	R	2	SCREW TSEI M6X18
138602	1	BODY W/BUSH	138602	R	2	SCREW TSEI M5X10
140108	1	CAP				
140119	1	CPL TRIGGER VALVE				
145190	1	BASIC SLIDER				
164032	1	CPL TRIGGER				
166027.1	R	1	166027.1	R	1	GASKET
168280	1	DRIVER PLATE	168280	1	DRIVER PLATE	
172309	1	LOADER	172309	1	LOADER	
184003	1	CATCH	184003	1	CATCH	
200014	R	1	200014	R	1	SPRING
200020	R	1	200020	R	1	SPRING
200043	R	1	200043	R	1	SPRING
200058	R	1	200058	R	1	SPRING
200060	R	1	200060	R	1	SPRING
280053.2	R	1	280053.2	R	1	BUMPER
286012	1	SILENCER	286012	1	SILENCER	
288041	1	PIN	288041	1	PIN	
288206	1	CPL STUD	288206	1	CPL STUD	
300367.1	R	1	300367.1	R	1	CPL DRIVER PISTON
300380	1	CPL VALVE PISTON	300380	1	CPL VALVE PISTON	
> 326041.2		1	> 326041.2		1	CPL ADAPTER 3/8 19 THREAD
400124	R	1	400124	R	1	SAFETY
410033	R	1	410033	R	1	PUSHER
420135.1	1	HOLDER	420135.1	1	HOLDER	
430010	1	BAR RETAINER	430010	1	BAR RETAINER	
440081	2	PUSHER BLOCK	440081	2	PUSHER BLOCK	
520011	1	SAFETY LINK	520011	1	SAFETY LINK	
610003	R	1	610003	R	1	STOP RING
622003	R	1	622003	R	1	O-RING
622010	R	1	622010	R	1	O-RING
622012	R	1	622012	R	1	O-RING
622014	R	1	622014	R	1	O-RING
622025	R	2	622025	R	2	O-RING
622033	R	1	622033	R	1	O-RING
622046	R	1	622046	R	1	O-RING
622050	R	1	622050	R	1	O-RING
622059	R	1	622059	R	1	O-RING
622070	R	1	622070	R	1	O-RING
622089	R	1	622089	R	1	O-RING
622116	R	2	622116	R	2	O-RING



R = RECOMMENDED SPARE PARTS
> = DENOTES NEW CHANGE