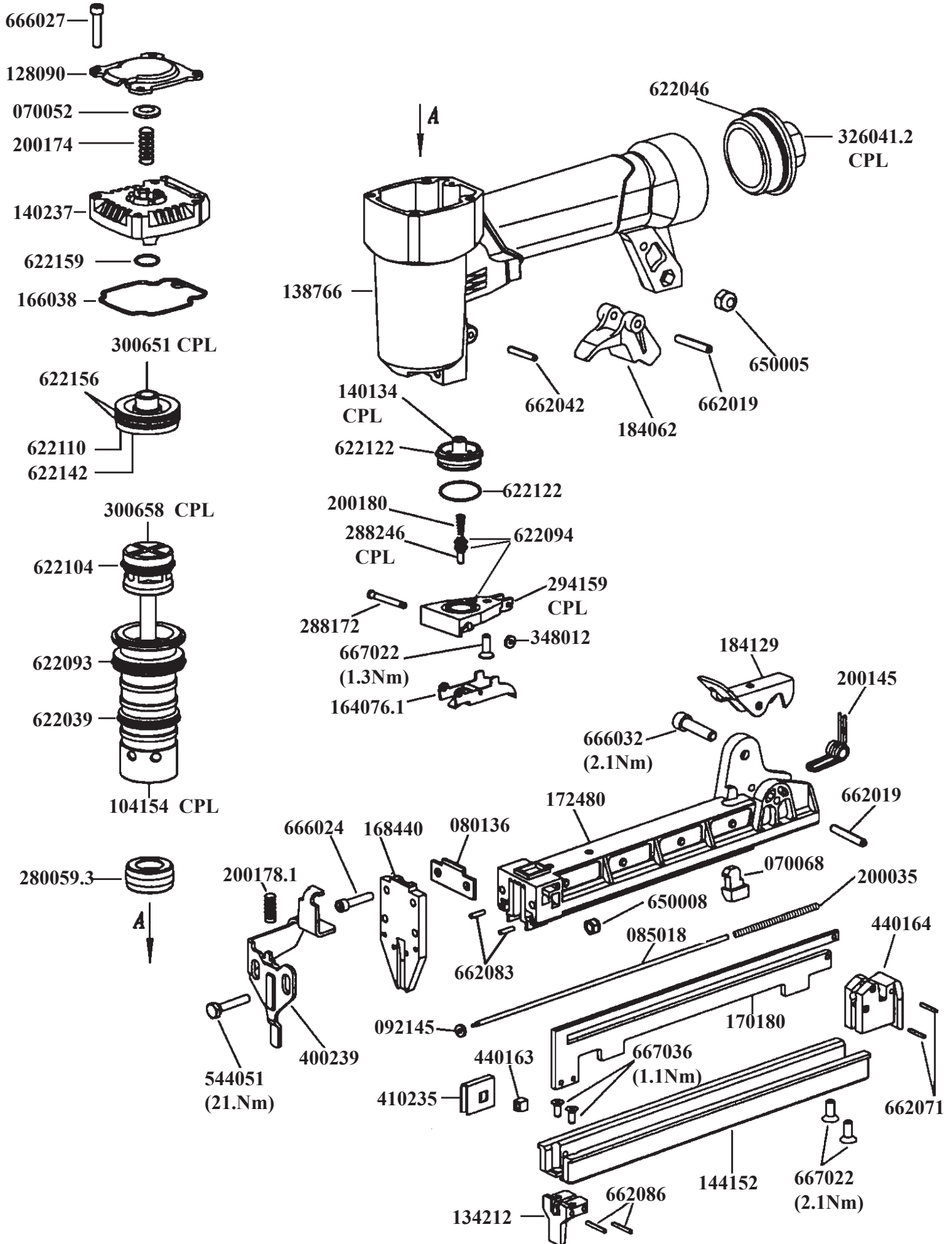


ESP	MACHINE CODE	DESC.
9	A10332	P21P 90-25A



MACHINE CODE
A10332

MODEL
P21P 90 - 25A

PARTS LIST

CODE	QTY	DESCRIPTION	CODE	QTY	DESCRIPTION
070052	R 1	BUFFER	622142	R 1	O-RING
070068	R 1	BUFFER	622156	R 2	O-RING
080136	1	DRIVER REST	622159	R 1	O-RING
085018	1	GUIDE BAR	650005	R 1	SELF LOCK NUT M5
092145	1	BUSH	650008	R 2	NUT
104154	1	CPL CYLINDER	662019	R 2	PIN 4X26
128090	1	COVER	662042	R 1	PIN 4X24
134212	1	NOSE RAIL	662071	R 3	PIN
138766	1	BODY	662083	R 2	PIN
140134	1	CPL TRIGGER VALVE	662086	R 2	PIN
140237	1	CAP	666024	R 2	SCREW
144152	1	SLIDER	666027	R 4	SCREW M4X25
164076.1	1	CPL TRIGGER CT	666032	R 1	SCREW
166038	R 1	GASKET	667022	R 3	SCREW
168440	1	DRIVER PLATE	667036	R 2	SCREW
170180	1	RAIL			
172480	1	LOADER			
184062	1	QUICK RELEASE CATCH			
> 184129	1	CATCH			
200035	R 1	SPRING			
200145	R 1	SPRING			
200174	R 1	SPRING			
200178.1	R 1	SPRING			
200180	R 1	SPRING			
> 280059.3	R 1	BUMPER			
288172	1	PIN			
288246	1	CPL STUD			
294159	1	CPL TRIGGER PLATE			
300651	1	CPL VALVE PISTON			
300658	1	CPL DRIVER PISTON			
> 326041.2	1	ADAPTER			
348012	1	STOP RING			
400239	R 1	SAFETY			
410235	R 1	PUSHER			
440163	1	PUSHER BLOCK			
440164	1	CATCH SLOT			
544051	R 2	SCREW			
622039	R 1	O-RING			
622046	R 1	O-RING			
622093	R 1	O-RING			
622094	R 3	O-RING			
622104	R 1	O-RING			
622110	R 1	O-RING			
622122	R 2	O-RING			

R = RECOMMENDED SPARE PARTS
> = DENOTES NEW CHANGE