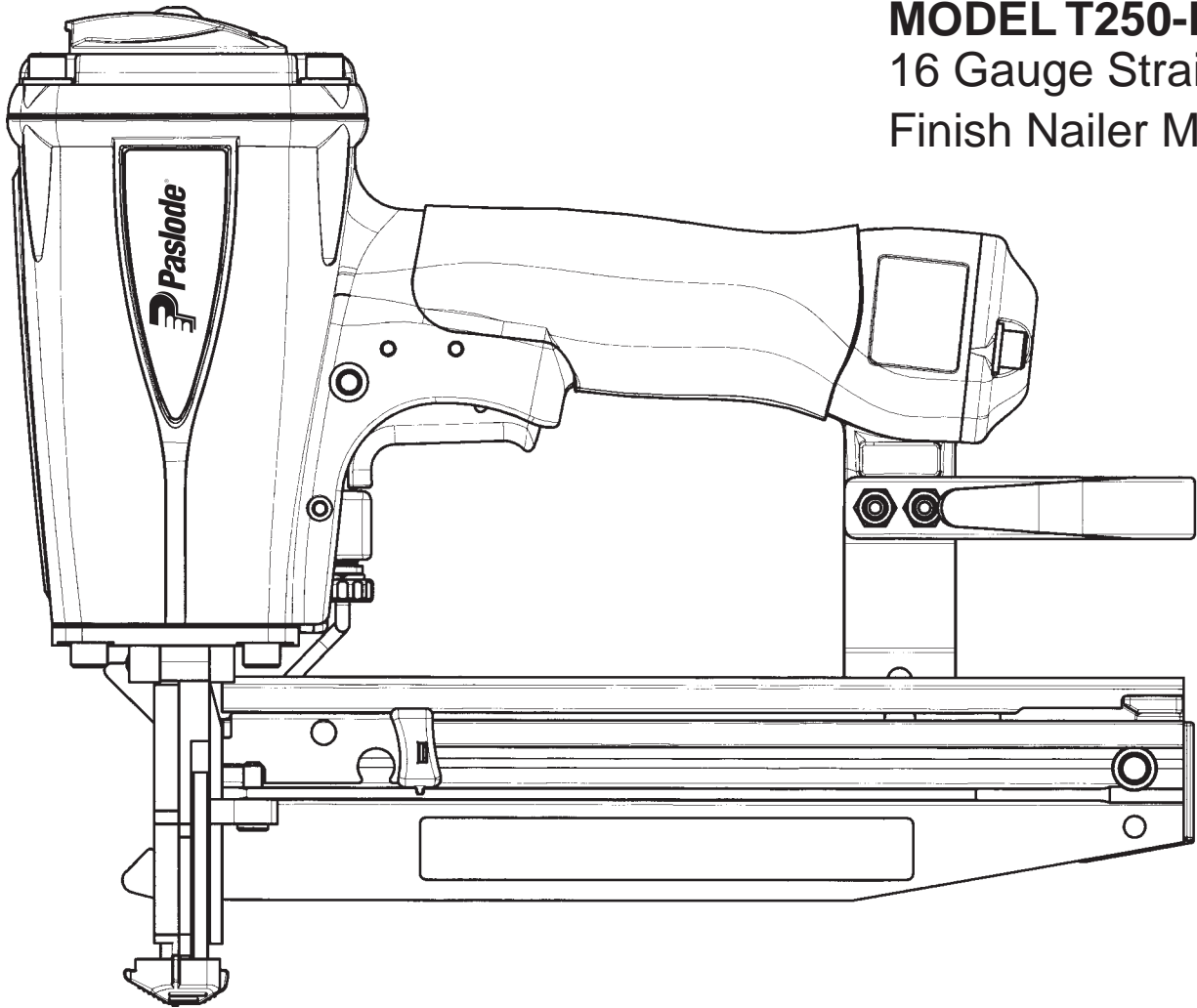




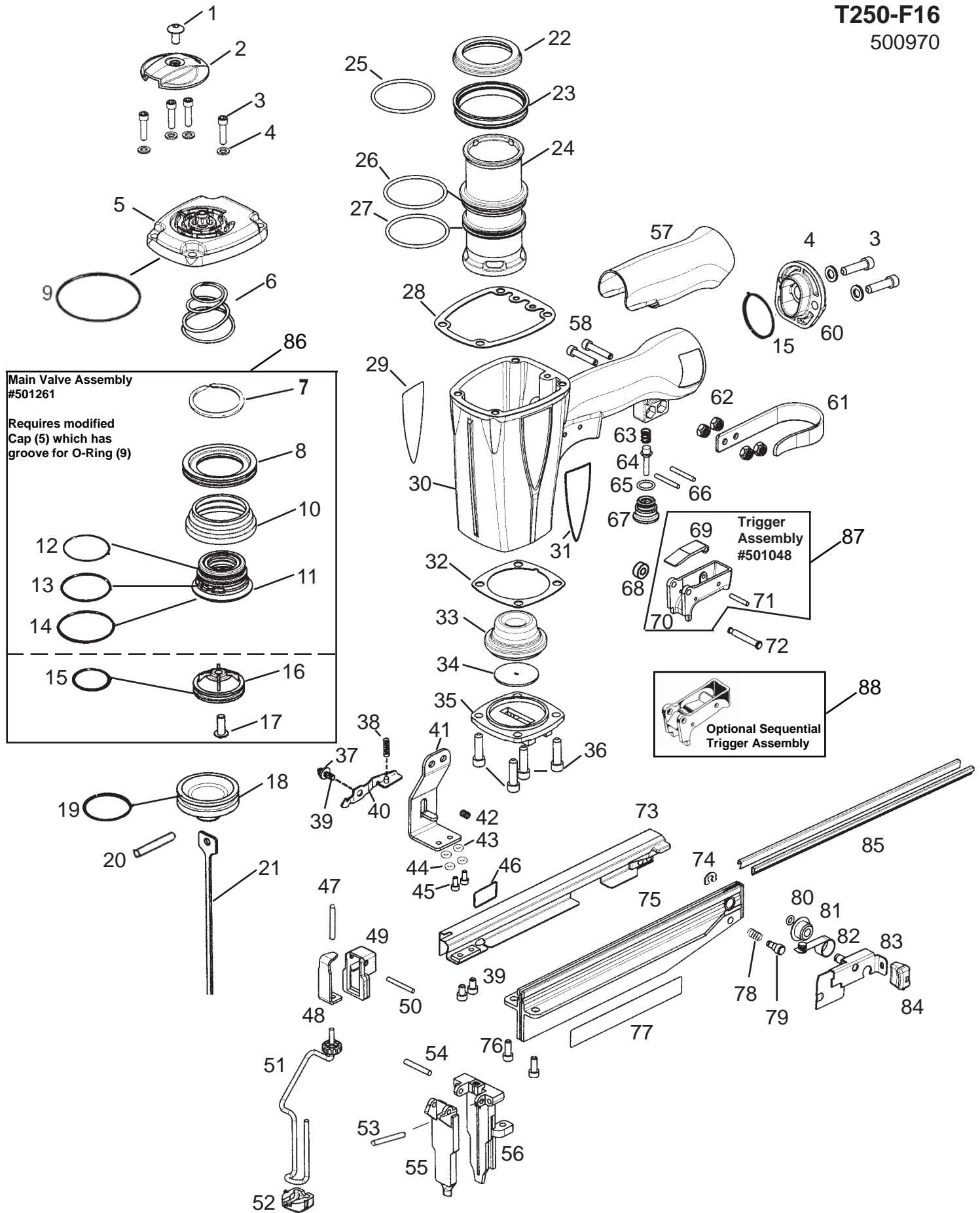
MODEL T250-F16
16 Gauge Straight
Finish Nailer MK1



IMPORTANT!
DO NOT DESTROY

It is the customer's responsibility to have all operators and service personnel read and understand this manual.

**OPERATING MANUAL AND
SCHEMATIC**



Main Valve Assembly #501261

Requires modified Cap (5) which has groove for O-Ring (9)

7

8

10

11

12

13

14

15

16

17

Trigger Assembly #501048

69

70

71

72

Optional Sequential Trigger Assembly

88

PARTS LEGEND

PASLODE T250-F16 MK1

500970/B20115 MK1

1	501043	1	Screw THSC 1/4-20 X 1/2	**	46	500458	1	Label, Warning
2	500956	1	Cap Diffuser	*	47	500772	1	Spring, WCE
→	3	501299	6	Screw SHC 1/4-20 X 1 (RPLS 091592)	48	501143	1	WCE, Intermediate
→	4	092757	0	Washer, Flat 1/4 (Obsolete)	49	500766	1	Guide Block
→	5	501254	1	Cap (RPLS 500958) (Main Valve Assy 501261 RQD)	50	071297	1	Pin, Roll 1/8 X 1-1/8
6	402717	1	Spring, Conical	51	500840	1	WCE Assy (RPLS 403707)	
7	404230	1	Ring, Retaining	→	52	404180	1	No-Mar Tip, Deep Drive (Orange)
8	404122	1	Piston, Upper Valve (PA 501261)	53	404698	2	Pin, Roll Assy	
* 9	091537	1	O-Ring	54	402730	1	Pin	
10	404054	1	Seal, Main Valve (PA 501261)	55	403592	1	Front Guide	
11	404056	1	Piston, Valve Lower (PA 501261)	56	403591	1	Back Plate	
* 12	090927	1	O-Ring	57	501023	1	Grip, Handle	
* 13	092775	1	O-Ring	58	080326	2	Screw SHC 10-32 X 1	
* 14	092773	1	O-Ring	59			Deleted	
* 15	404256	2	O-Ring	60	500963	1	End Plug	
16	500954	1	Post, Main Valve	61	500955	1	Belt Hook	
17	015660	1	Screw BHC 10-24 X 1/2	62	092037	4	Nut, Locking 10-32	
18	500951	1	Piston	63	097748	1	Spring	
* 19	405430	1	O-Ring, Piston	64	097746	1	Pin, Valve	
20	401130	1	Pin, Driver Lock	* 65	092174	1	O-Ring	
* 21	501160	1	Driver Blade (Flat)	66	026133	2	Pin, Roll 1/8 X 1	
* 22	402725	1	Seal, Sleeve	67	401958	1	Body, Valve	
23	405243	1	Flange, Sleeve	68	402668	1	Washer, Retaining	
24	500952	1	Sleeve	69	501008	1	Lever, Trigger (PA 501048)	
* 25	402728	1	O-Ring	70	501010	1	Trigger, Bump (PA 501048)	
* 26	091966	1	O-Ring	71	501009	1	Pin, Roll	
* 27	500369	1	O-Ring, Sleeve	72	402669	1	Pin, Trigger	
28	500975	1	Gasket, Cap	73	500972	1	Rail Cover Assy	
29	501140	1	Label, Logo Housing LH	74	403713	1	E-Ring, Retaining	
30	500957	1	Housing	75	500968	1	Rail Assy	
31	501141	1	Label, Logo Housing RH	76	009397	2	Screw SHC 10-24 X 1/2	
32	402708	1	Gasket, Nose	77	501142	1	Name Plate	
33	500950	1	Bumper	78	091536	1	Spring	
34	500953	1	Seal, Driver Blade (Flat)	79	403711	1	Latch Pin, Follower	
35	402706	1	Flange, Nose	* 80	094295	1	O-Ring	
36	091545	4	Screw SHC 1/4-20 X 7/8	81	403710	1	Roller	
37	402629	1	Washer, Hardened #10	82	403708	1	Negator	
38	405076	1	Spring, Front Guide Latch	83	403715	1	Follower Assy	
39	403716	3	Screw SHC 10-32 X 5/16	84	501139	1	Follower Tab	
40	403712	1	Latch Assy, Front Guide	* 85	500973	2	Wear Strip	
41	501133	1	Bracket Assy, Rail	→	86	501261	1	Main Valve Assy (CAP 501254 RQD)
42	401988	1	Spring				(RPLS 404188, 404122, 404054, 404056)	
43	403812	2	Washer	87	501048	1	Trigger Assy, Bump (Orange) (RPLS 501010)	
44	004238	2	Washer, Locking #10	88	501039	-	Trigger Assy, Sequential (Grey) (Optional)	
45	004224	2	Screw SHC 10-32 X 3/8	→	AR	010018	-	Service Kit (AU Only)

- * Normal Wear Items
- ** Ensure Warning Label is affixed and legible
- New Change
- PA Purchase Assembly (individual part not for sale)
- AR As Required
- RQD Required - Use with corresponding modified part(s)

Nominal air consumption at 100 PSI = 0.04 SCFM/Fastener



SAFETY INSTRUCTIONS



WEAR EYE AND HEARING PROTECTION

Always wear approved eye and hearing protection when operating tool. Ensure others in the near vicinity use the same protective equipment.
Use eye protection when cleaning tool.



USE SPECIFIED AIR PRESSURES ONLY

Operate the tool at specified air pressures only. Never exceed maximum. Check regulated air pressure gauge operation at least twice a day.



USE COMPRESSOR AIR SUPPLY ONLY

Never use any bottled air or gases such as oxygen to operate the tool. Such action may cause catastrophic failure, causing serious injuries.



WARNING: All parts must be periodically inspected and replaced if worn or damaged. Failure to comply can affect the tool's operation and present a safety hazard.