

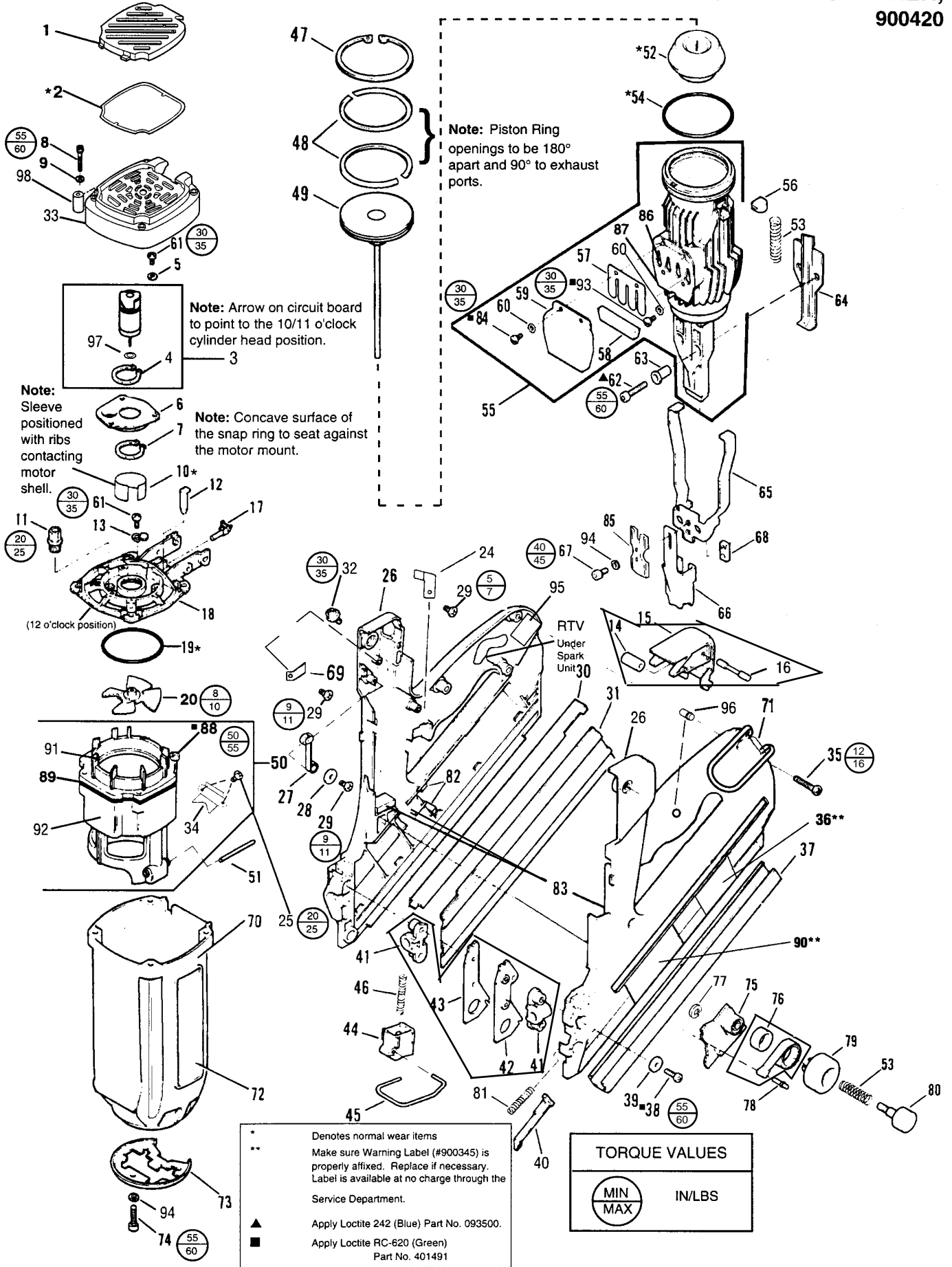
**PASLODE IMPULSE  
FRAMING NAILER**

**TOOL SCHEMATIC AND PARTS**

**IMPORTANT!  
DO NOT DESTROY**

Always refer to operating manual #403608 for detailed information on this tool. It is the customer's responsibility to have all operators and service personnel read and understand this information.

**IMPULSE CORDLESS FRAMING NAILER, 900420**



# PARTS LEGEND IMPULSE FRAMING NAILER, 900420

1	900320	1	Grill	49	404485	1	Piston Assembly
*2	900315	1	Filter	50	900521	1	Combustion Chamber Assembly
3	900469	1	Fan Motor Assembly (Includes PC board, washer and flat retaining ring)	51	404827	2	Pin
4	900300	1	Retaining Ring (flat)	*52	404419	1	Bumper
5	006562	3	Lockwasher #8	53	404411	3	Spring
6	900470	1	Motor Mount	*54	404482	1	O Ring Sleeve FOR EARLY MODEL
7	401355	1	Retaining Ring (curved)	> 55	901204	1	Sleeve Assembly Steel Ring 900934
> 8	901063	4	Shoulder screw 10-24 x 1-1/2	56	404464	2	Rubber Stop
9	008388	4	Flat Washer	57	404424	1	Reed Valve
*10	401356	1	Motor Sleeve	58	404422	1	Muffler
11	900286	1	Spark Plug Assembly, includes O-Ring	59	404423	1	Muffler Cover
12	404428	2	Push Rod	60	404468	4	Lock Washer
13	404453	1	Bracket, Cylinder Head	61	900596	4	Screw, Thread Forming 8-32 x 7/16
14	404432	1	Bushing, Actuator	62	403816	2	Socket Head Capscrew 10 - 24 x 1-1/8
15	900966	1	Actuator	63	404445	2	Bushing, Shear Lock
16	404433	1	Actuator Pin	> 64	902223	1	Wear Plate, Nose
17	401340	1	Stem Adapter	65	404410	1	Upper Probe
18	900471	1	Cylinder Head Machined	> 66	900982	1	Lower Probe
*19	403992	1	O-Ring	67	009037	2	Socket Head Capscrew 10 - 32 x 1/2
20	403167	1	Fan Blade Assembly	68	401380	1	Tie Bar
21	900474	1	Spark Unit Assembly	69	900425	1	Clamp, Cable
22	900475	1	Molded Circuit Assembly	70	404704	1	Housing Assembly
23	900478	1	Spark Plug Contact Assembly	71	900289	1	Belt Hook
24	900231	1	Clip, ESU Wire	72	404390	2	Label
■ 25	403987	2	Screw, thread-forming 6-32 x 1/4	> 73	900980	1	Retainer Ring, Sleeve
26	219237	1	Handle Assembly Kit - Right & Left	▲ 74	004618	3	Socket Head Capscrew 10-24 x 5/8
27	404448	1	Roller Lever Assembly	75	403985	1	Follower
> 28	900597	1	Screw & Flat Washer	76	900520	1	Follower Bushing Spring Assembly
29	404702	2	Screw, Thread Forming 6 x 3/8	> 77	901202	1	Retaining Ring
30	404436	1	Nail Channel	78	403986	1	Spring Pin
31	404441	1	Cover Plate Magazine	79	403984	1	Follower Guide
32	404477	2	Screw 10 - 32 x 1/2	80	900297	1	Follower Button
> 33	901321	1	Cap	81	404457	1	Spring
34	404412	1	Wear Plate, Chamber Lock	82	404922	2	Pad, Battery Contact
35	900453	4	Screw Plastite 8-16 x 7/8	83	401450	5	Fuel Cell Pad
** 36	900508	1	Warning Label	■ 84	900596	2	Screw Torx 8 - 32 x 7/16
37	404442	1	Channel Magazine	> 85	900983	1	Cage Stop
■ 38	013625	4	Socket Head Capscrew 8 - 32 x 1/2	86	404426	1	Exhaust Baffle
39	404414	4	Flat Washer #8	87	404425	1	Reed Plate
40	404451	1	Lockout Bar, Follower	■ 88	900969	4	Torx Screw 8-32 x 5/8
> 41	901203	1	Shear Block, ASSY	89	900481	1	O-Ring
> 42	901203	1	Shear Block, ASSY	**90	900497	1	Warning Label
> 43	901203	1	Shear Block, ASSY	91	900372	1	Combustion Chamber Ring
44	404435	1	Trigger	92	900521	1	Combustion Chamber ASSEMBLY
45	900269	1	Chamber Lock Bar	93	900595	2	Torx Screw 8-32 x 3/8
46	404927	1	Spring, Trigger	94	004238	5	Lock Washer #10
47	401328	1	Retainer ring	> 95	901260	1	Nameplate
48	401461	2	Piston Ring	96	900427	1	Light Pipe
				97	900468	1	Washer, Motor Shaft
				> 98	901063	4	USE Shoulder Screw 901063

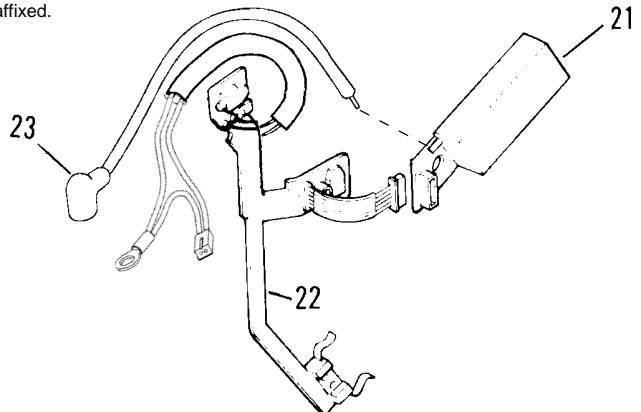
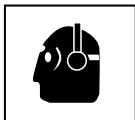
- \* Denotes normal wear items
- \*\* Make sure Warning Labels (#900497,900508) are properly affixed. Replace if necessary. Label is available at no charge through the Service Department.
- ▲ Apply Loctite 242 (Blue) Part No. 093500.
- Apply Loctite RC-620 (Green) Part No. 401491
- > Denotes new change.

## SAFETY INSTRUCTIONS

WEAR EYE AND HEARING PROTECTION



Always wear hearing protection and eye protection devices, including side shields when operating or working in the vicinity of a tool.



### WARNING

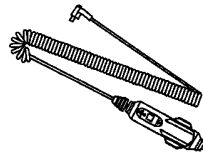
All parts must be periodically inspected and replaced if worn or broken. Failure to do this can affect the tool's operation and present a safety hazard.

# ACCESSORIES

---

## Car Adapter

Enables you to re-charge your battery with your vehicle's electrical system.



Part No. B20544H

---

## Battery Cell



Part No. B20544E

---

## Impulse Oil

Part No. B20544F

---

## 5/32" Hex Key

For adjusting work contacting element.

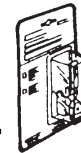


Part No. 401331

---

## No-Mar Work Contacting Element

Rubber tipped WCE to eliminate marring work surface.  
(Replacement rubber tip, Part No. 403369)



Part No. B20544J

---

## Impulse Cordless Nailer Case

Part No. 404710

---

## Degreaser Cleaner

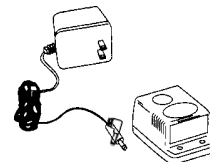
Ideal cleaner for all Paslode® tools.

Part No. B20544L

---

## Battery Charger Kit

(Replacement Transformer Only Part No. B20544C- Australia )



Part No. B20544B



An Illinois Tool Works Company  
888 Forest Edge Drive  
Vernon Hills, Illinois 60061